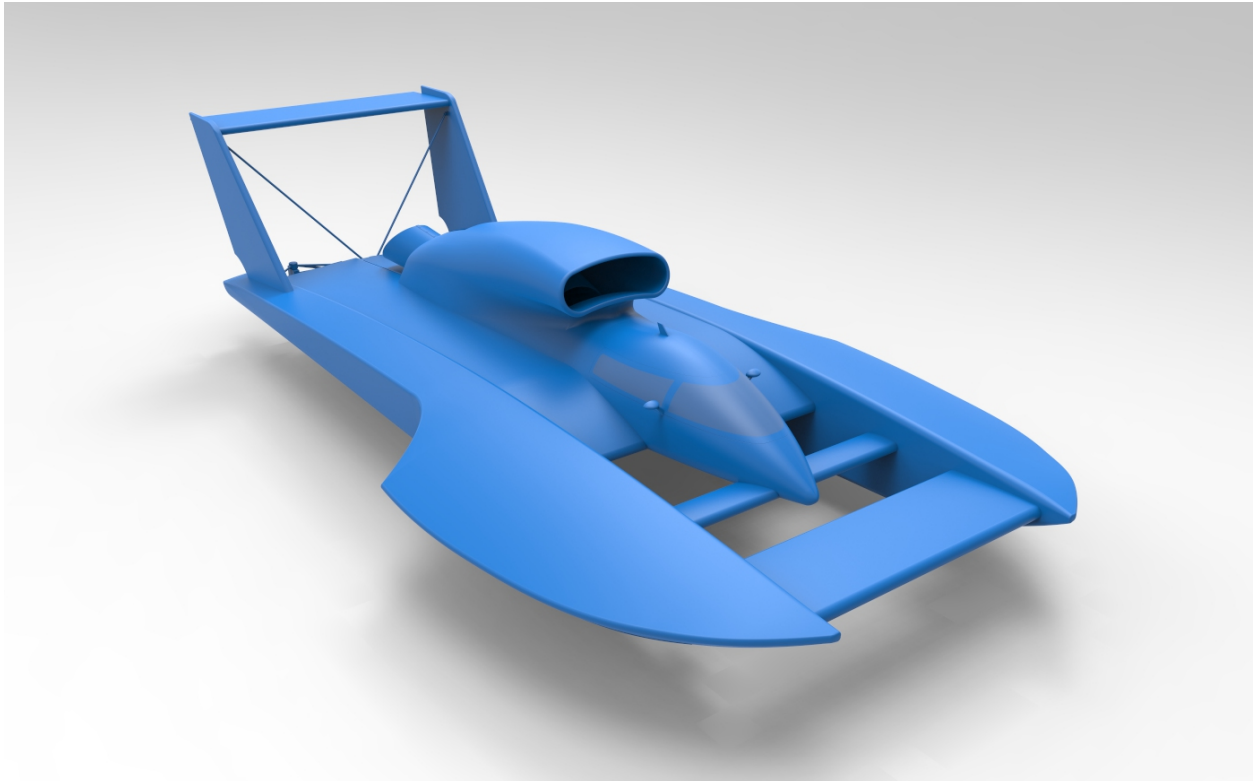


# Unlimited Hydroplane

Basic Instructions

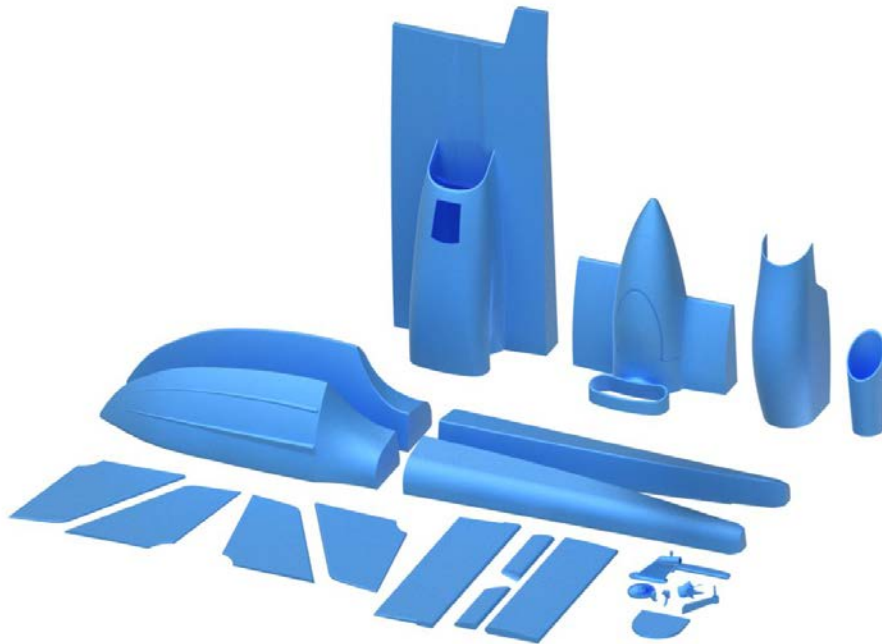


By : Solid Print 3D

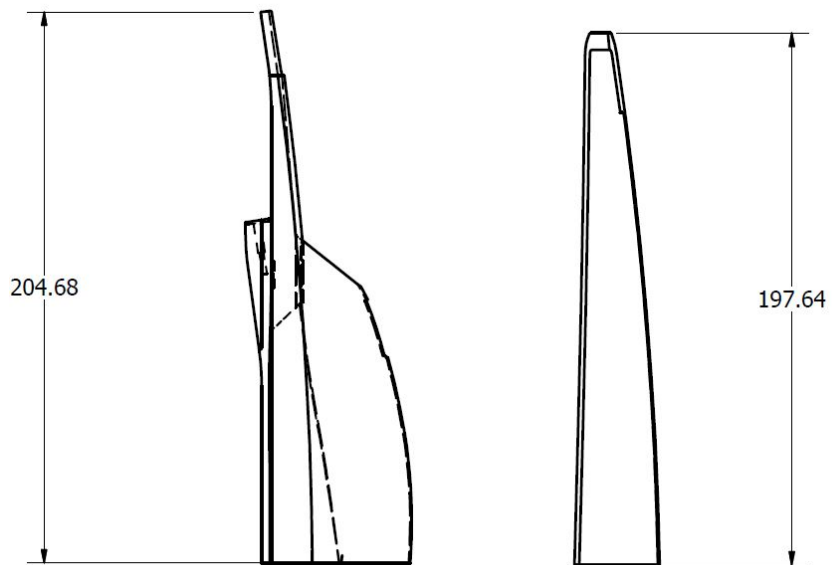
Patrick Saville

Michael Saville

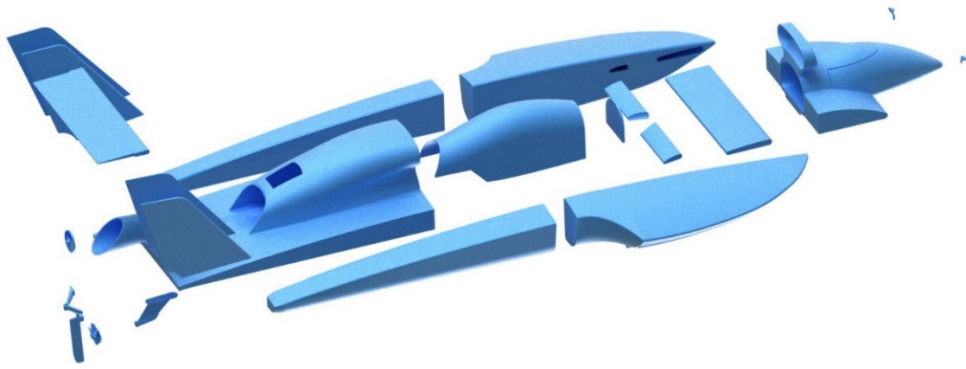
# Print Orientation



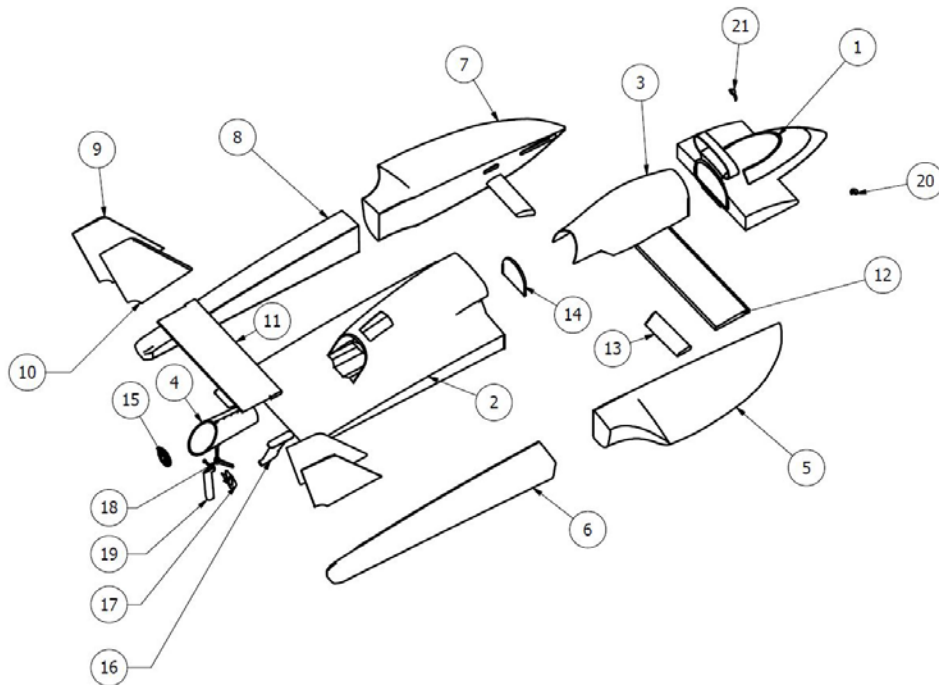
# Measurements of Largest Prints



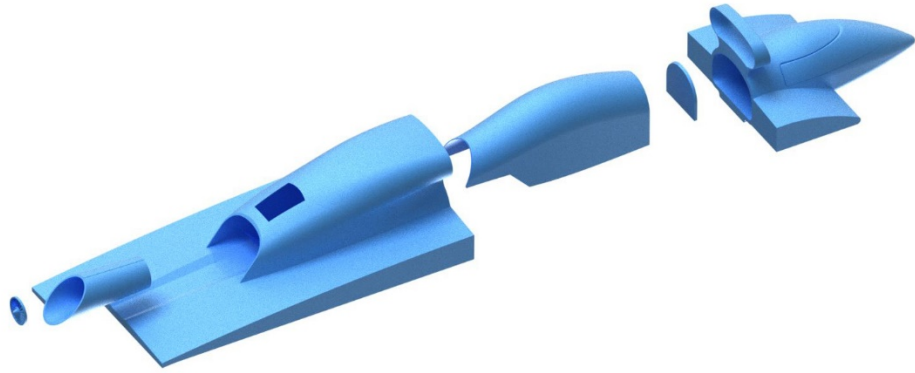
# General Layout



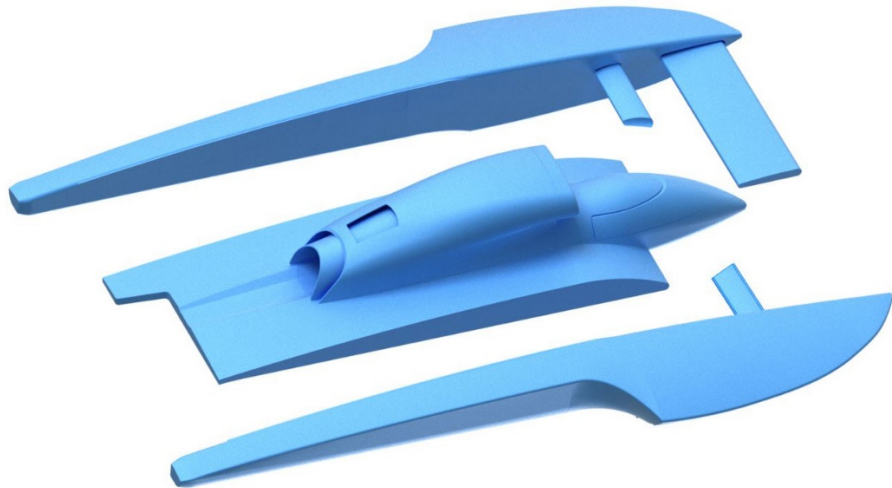
# Part Numbers



Step 1



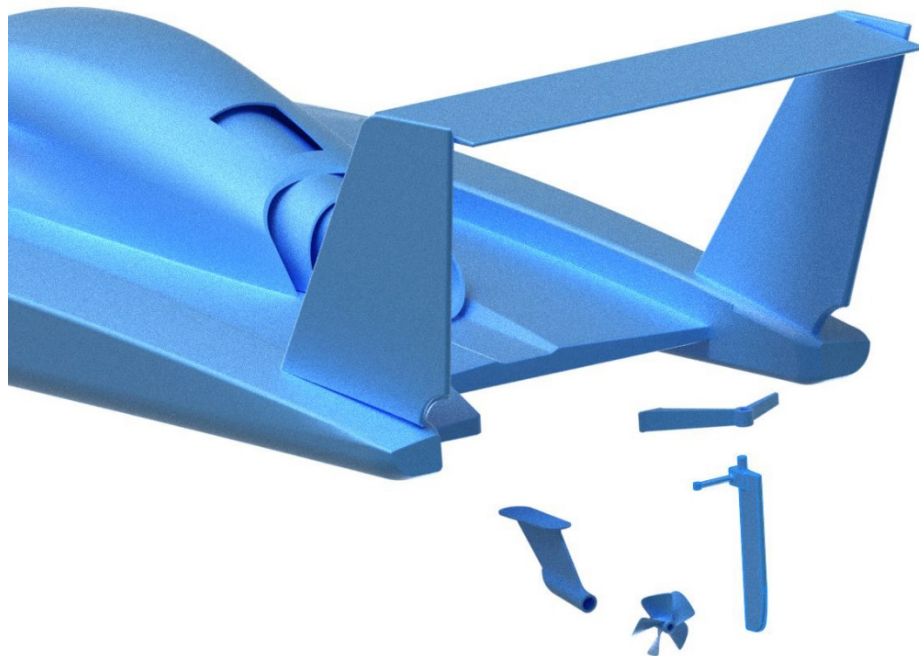
Step 2



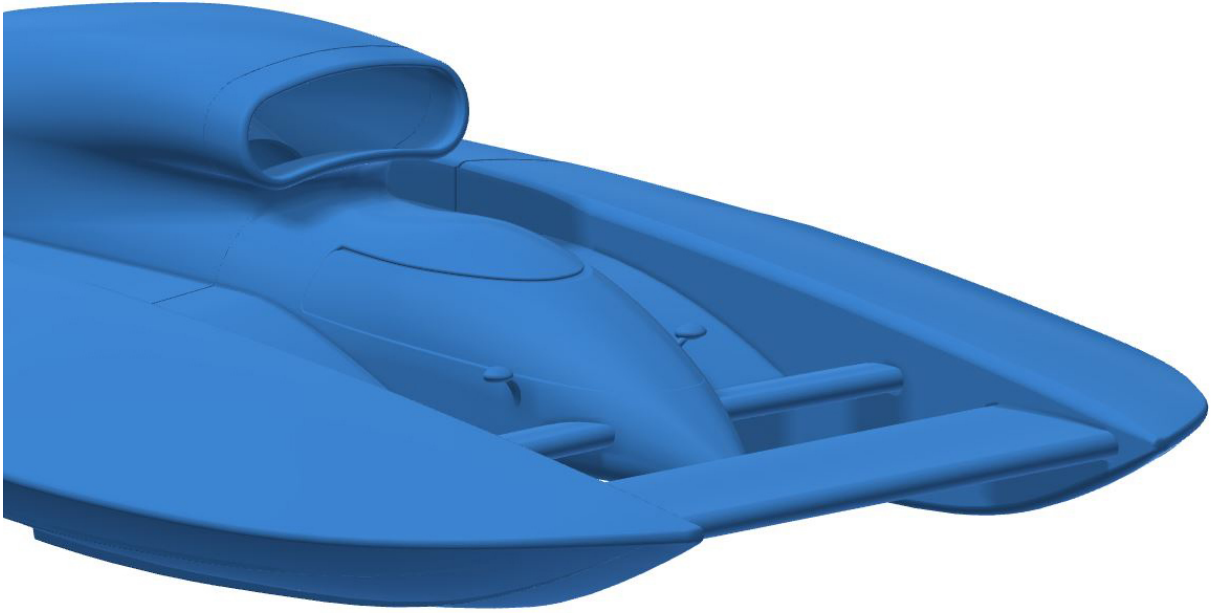
Step 3



Step 4



Step 5



**FINISHED**

## Notes:

- Parts #15 through #21 are too small for most FDM printers and can be omitted.
- The .stl files came in perfectly to CURA, but had errors when run through netfab's automatic repair
- The Sub cowling and mounting plate for the exhaust need to be installed before attaching nose to body
- Infill was set to 20% for our test, with .8mm shell

## Contact Us

You can contact us with any questions at  
[www.solidprint3d.com](http://www.solidprint3d.com)