

# Russian tank T-90 “Vladimir”

radio control model



Model maker:

Sergey Syuvaev (Topki, Kemerovskaya region)

Serebryakov Alexander (Sergiev Posad, Moscow region)

Assembly guide writer:

Serebryakov Alexander

Version 1.0

## Assembly guide

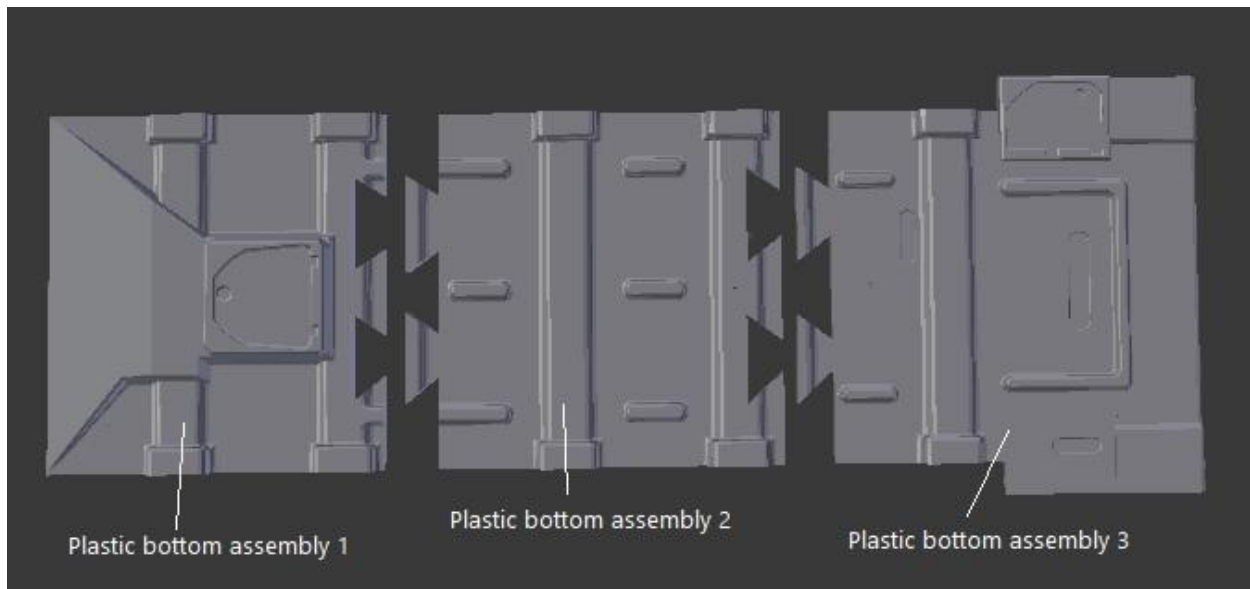
### Used symbols

- - glue

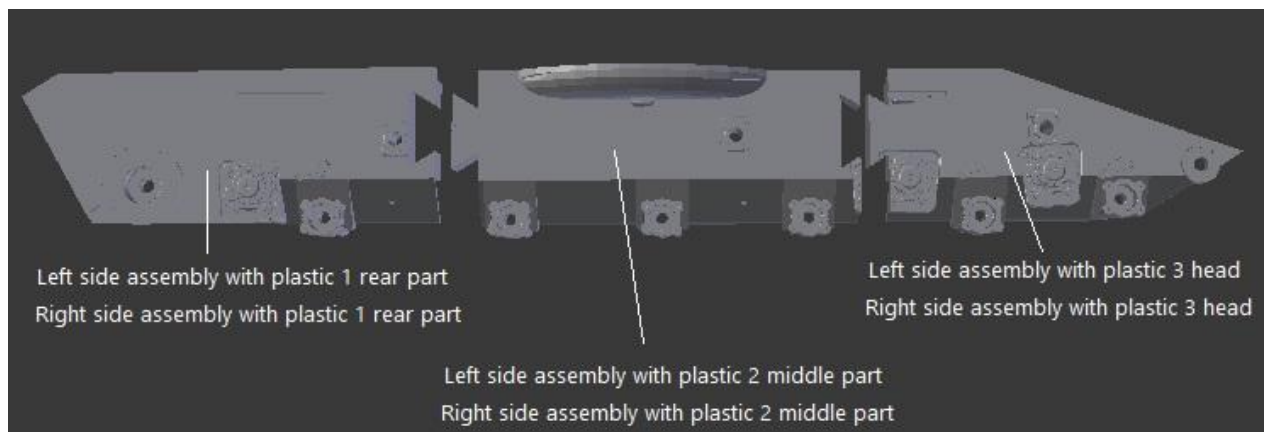
[ - wire by running through the holes

1. Download the last version pack of stl-files.
2. Print the details.
3. Glue according to the schemes.

### Hull



Put the parts on the glass (for alignment) and glue.

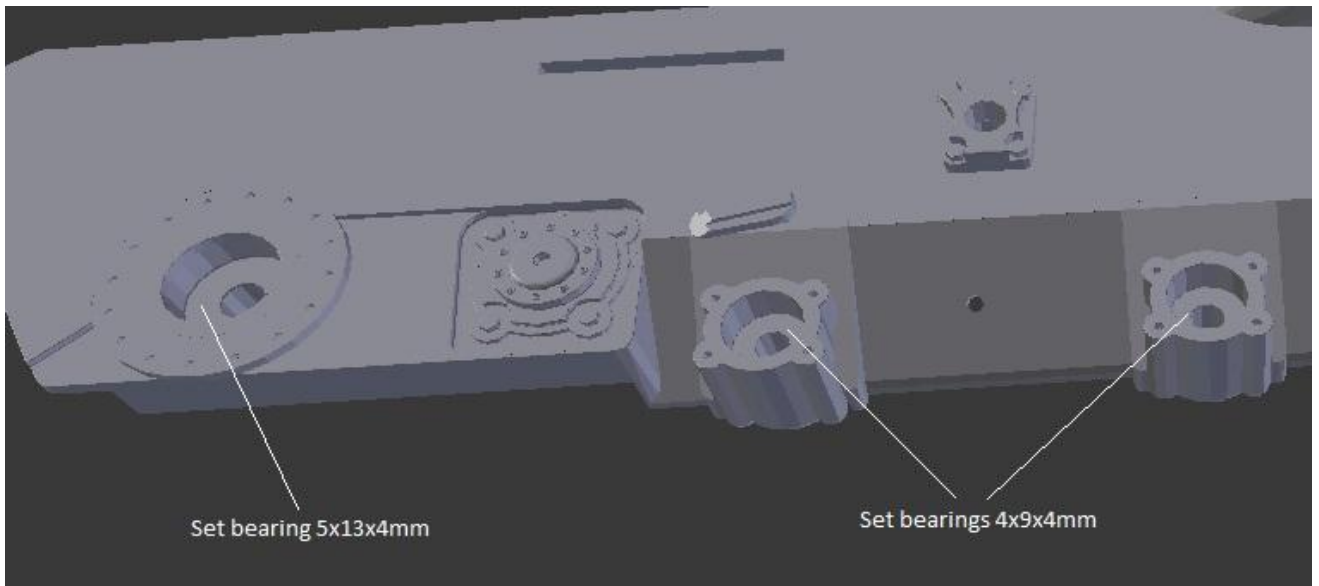
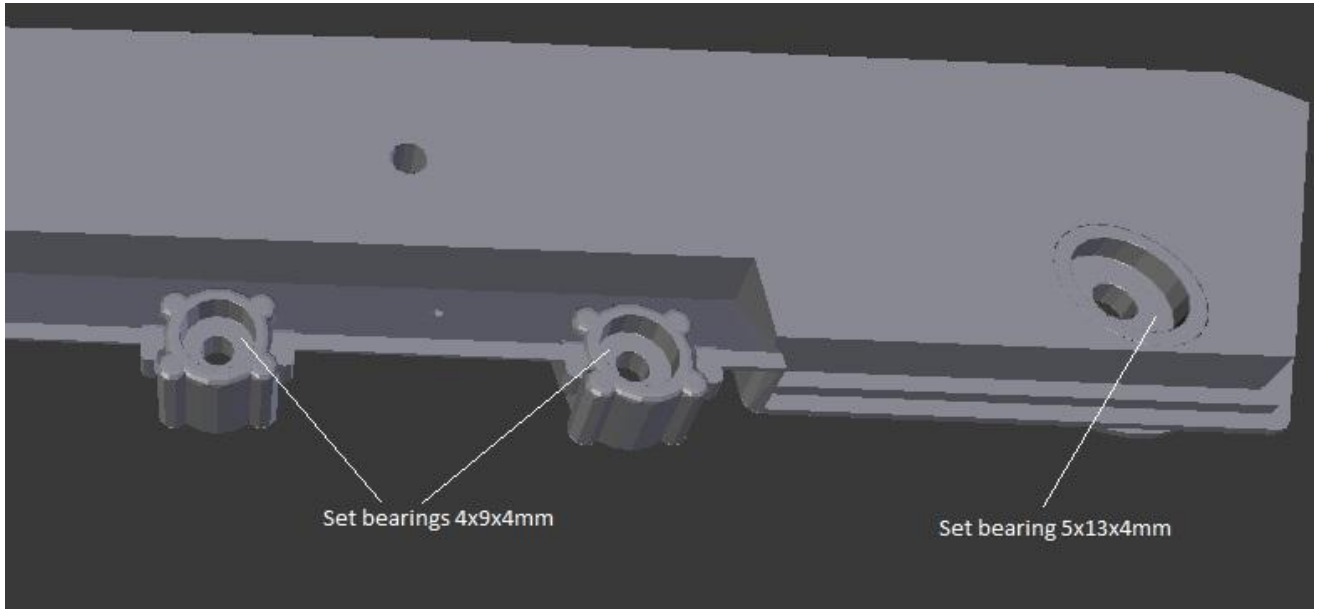


Put the left(right) parts on the glass (for alignment) and to glue.

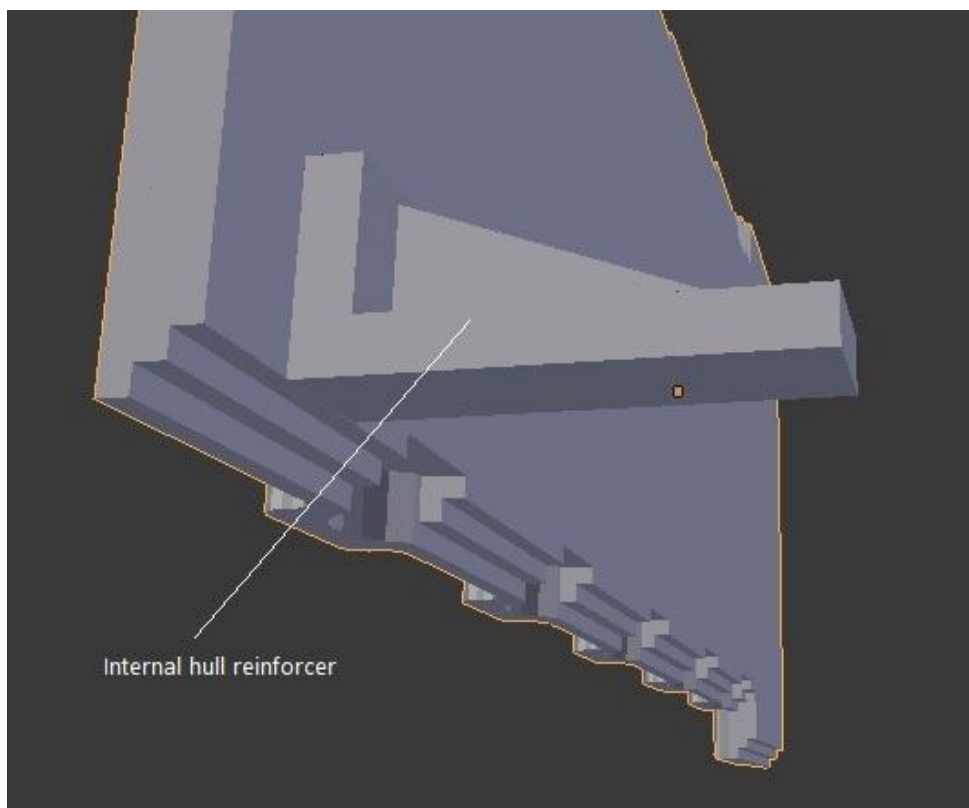
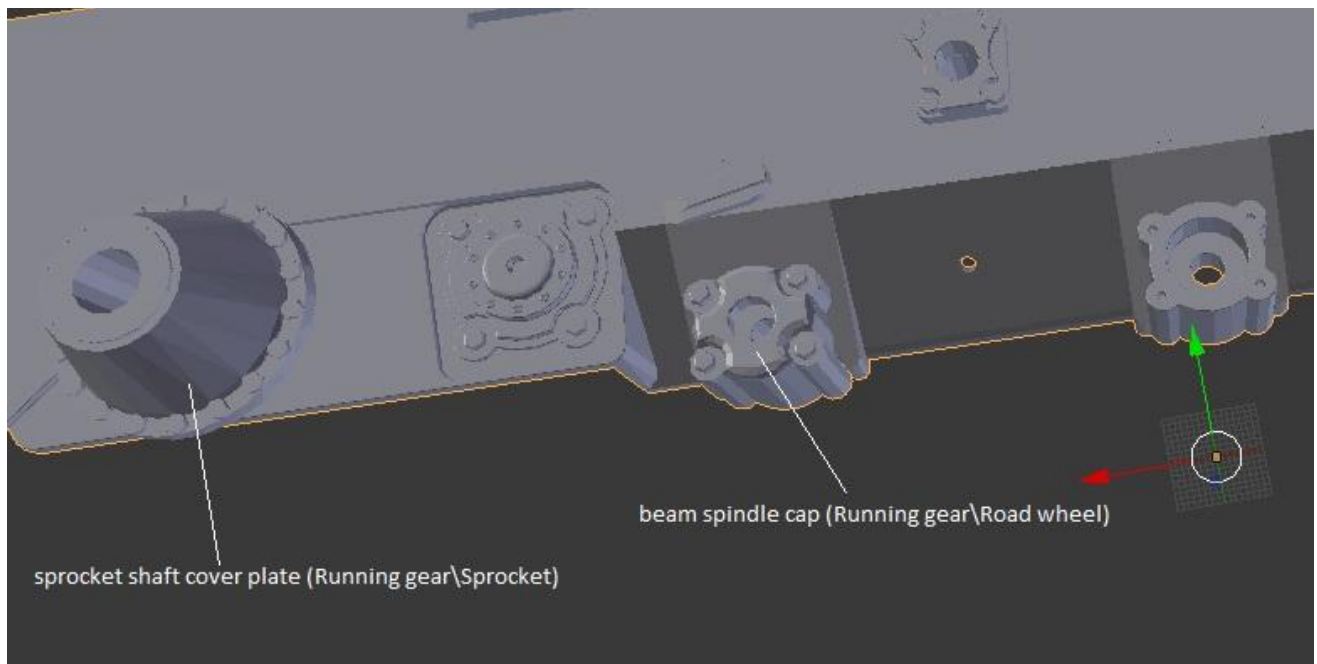
Set bearings.

Bearing 5x13x4 – 4 items.

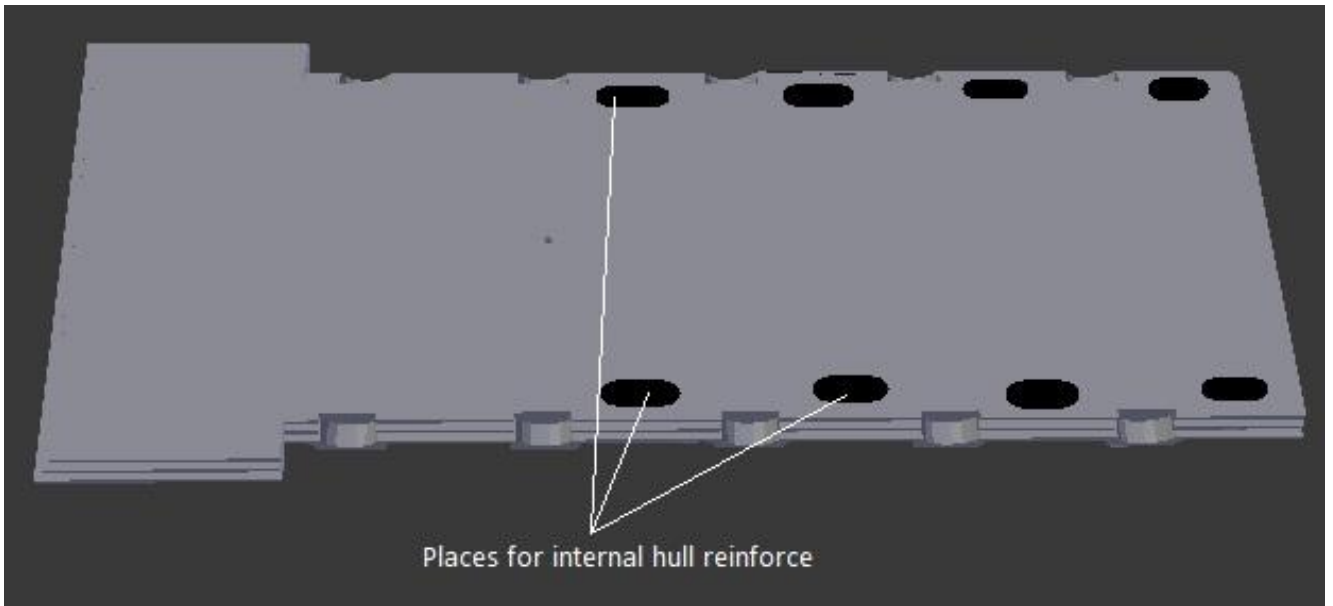
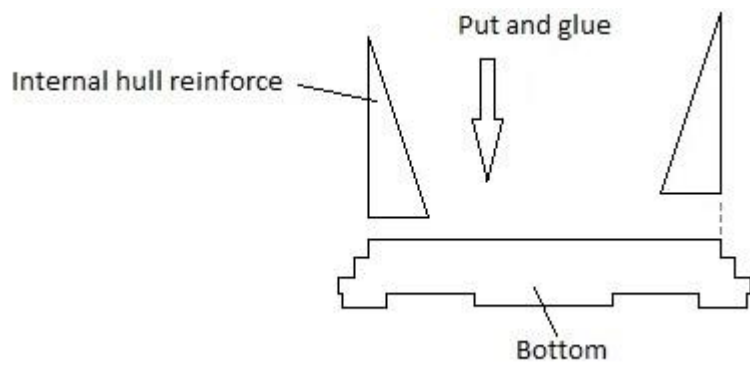
Bearing 4x9x4 – 24 items.



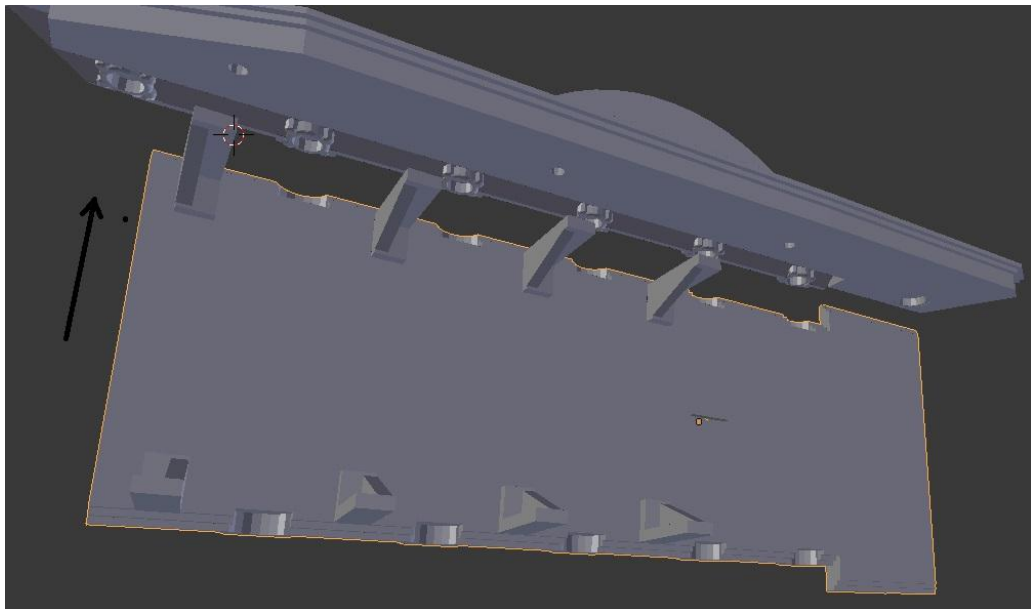
Set bearing`s covers



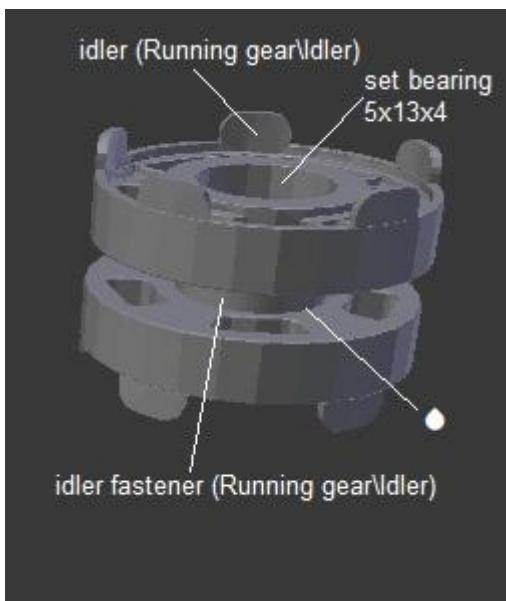
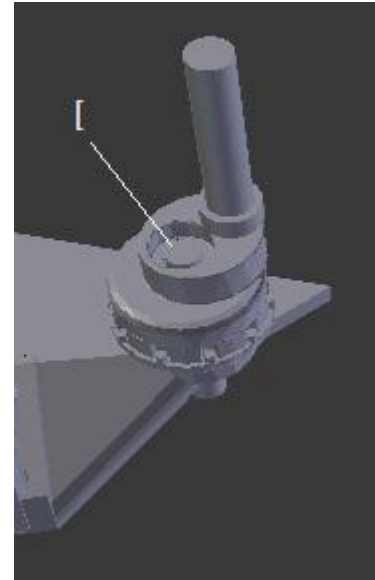
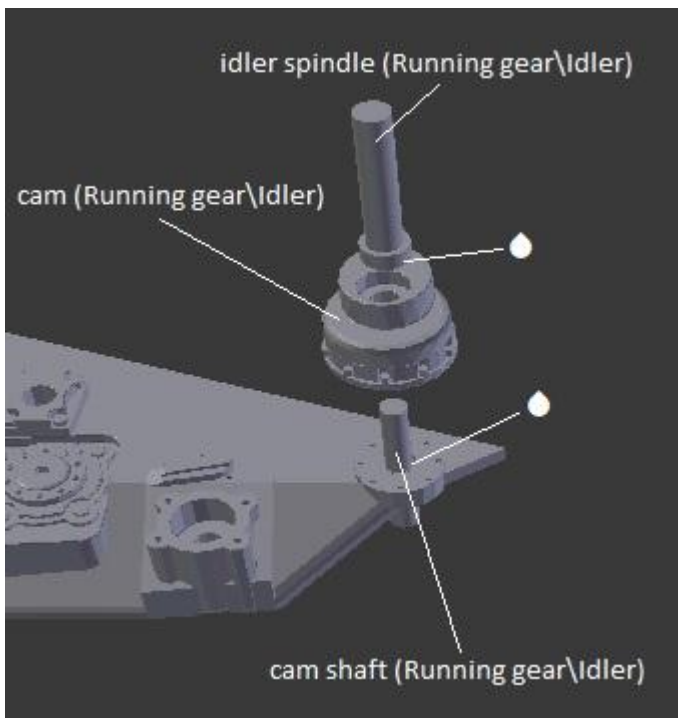
Print 8 parts of **internal hull reinforce**.



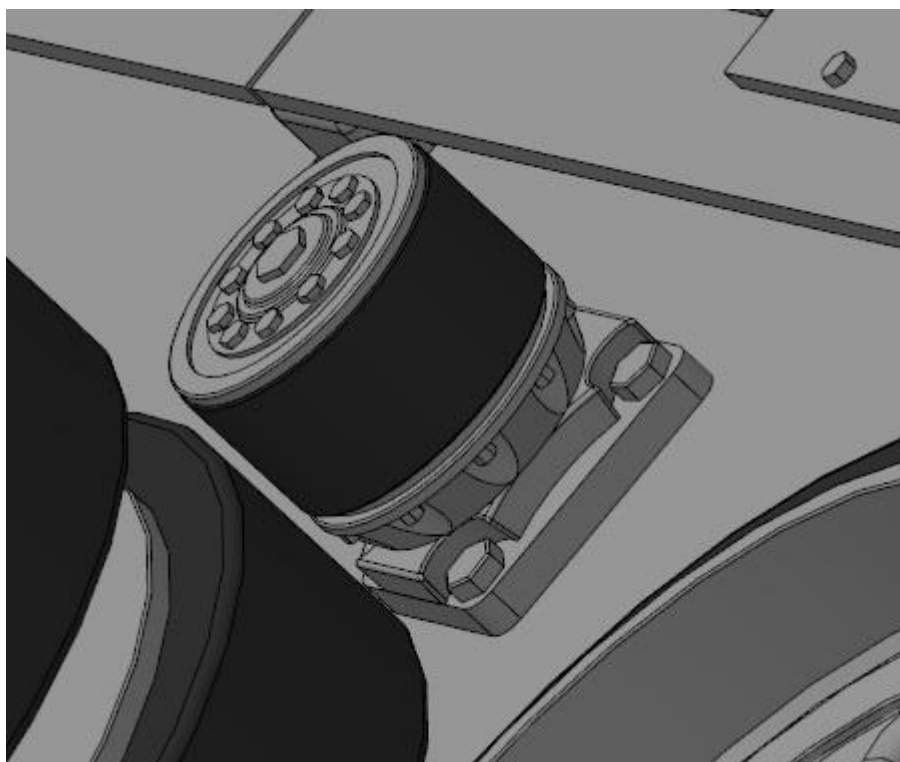
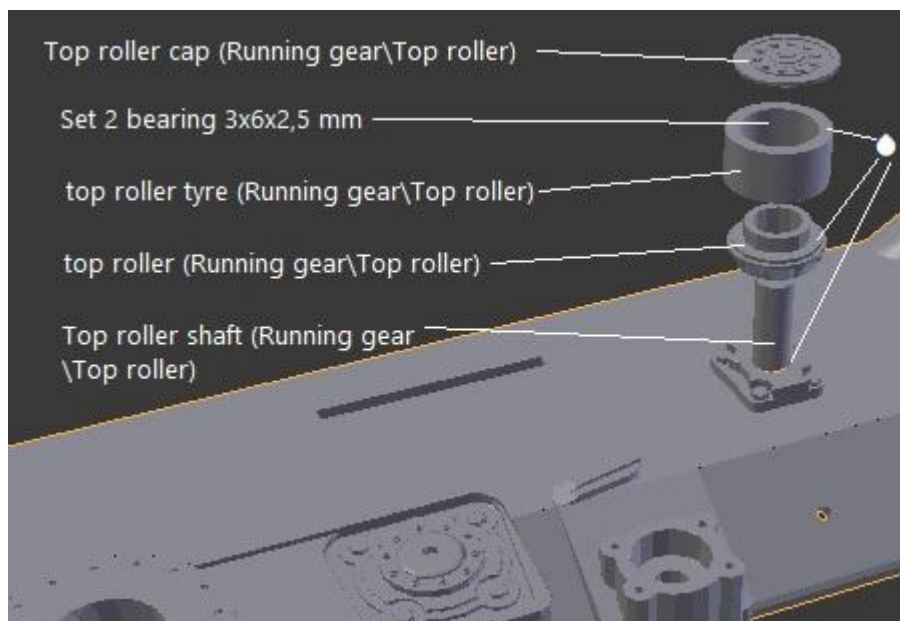
Left and right sides glue to bottom.



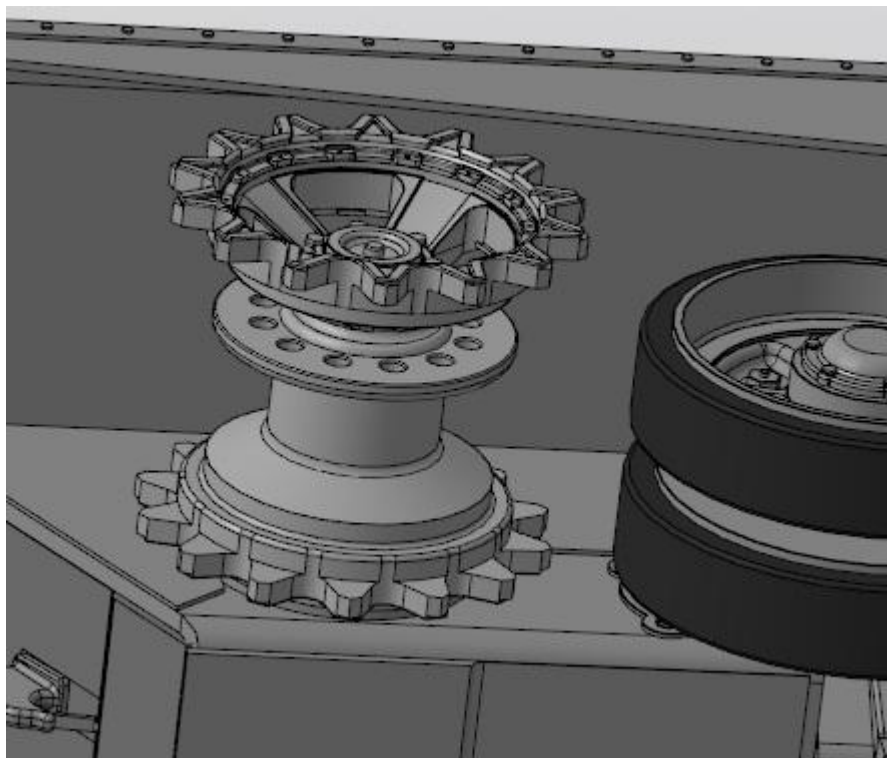
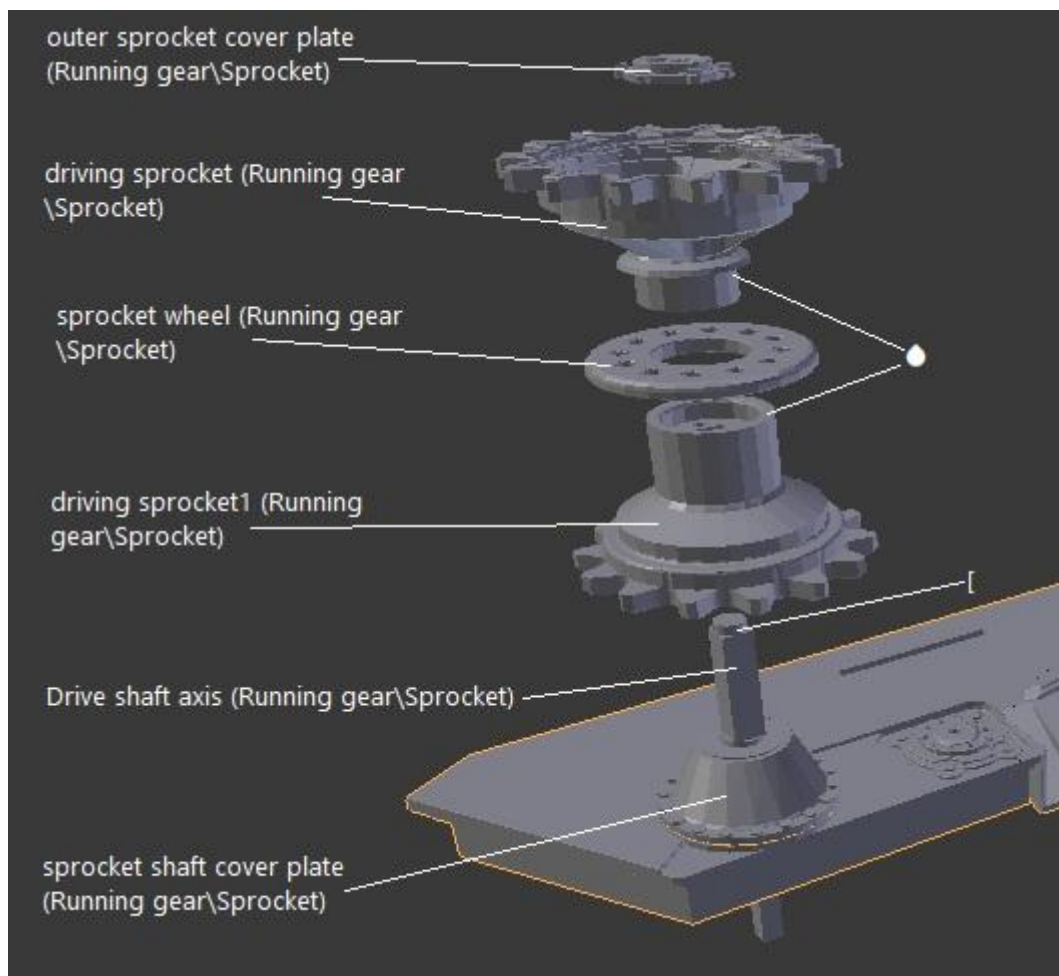
## Idler assembly (Running gear\Idler)



## Top roller assembly (Running gear\Top roller)

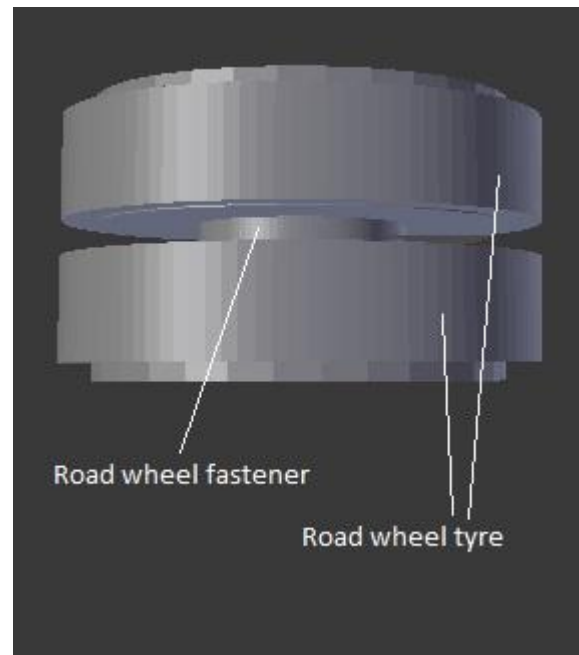
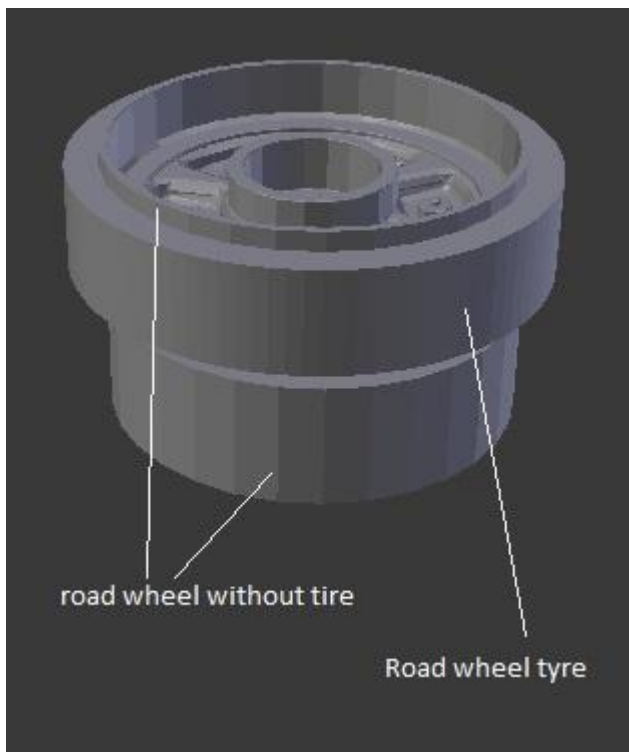


## Sprocket assembly (Running gear\Sprocket)





## Road wheel assembly (Running gear\Road wheel)

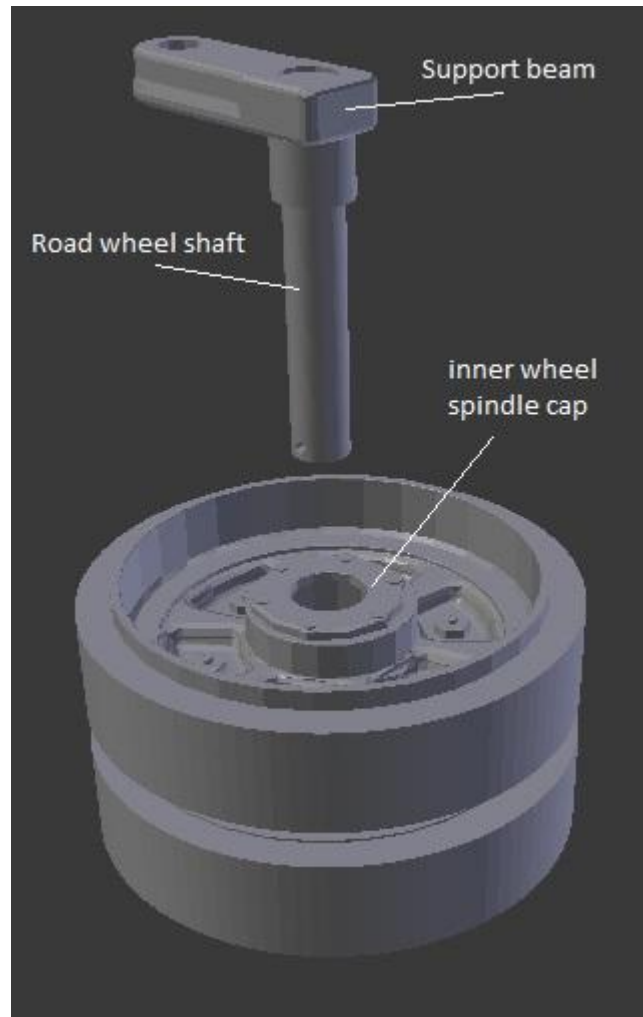


Road wheel tyre print from **rubber**.

Optional Road wheel:

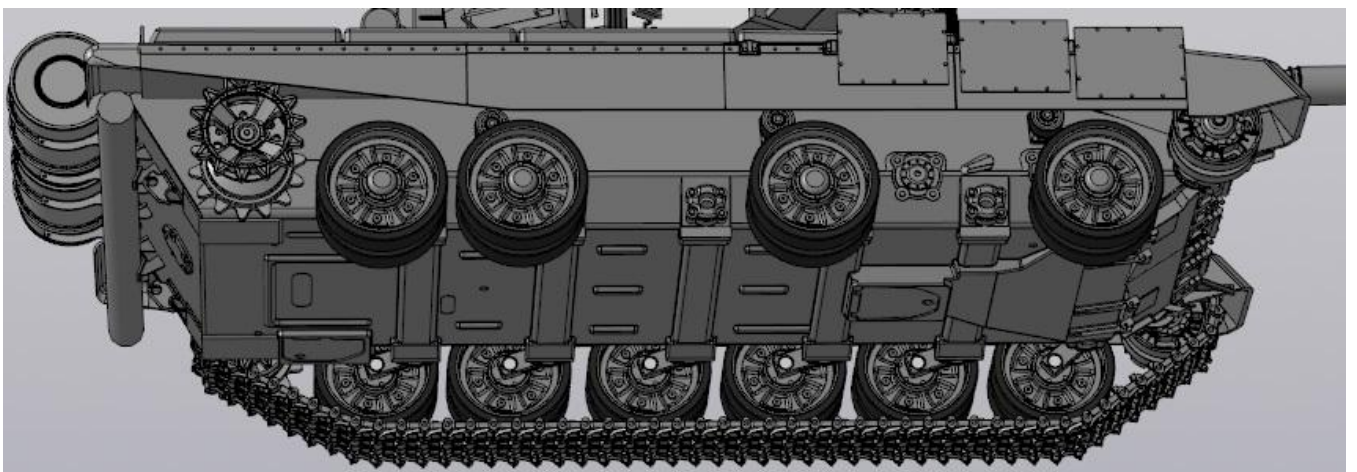
- Road wheel without tire – original
- Reinforced road wheel without tire – for hard using

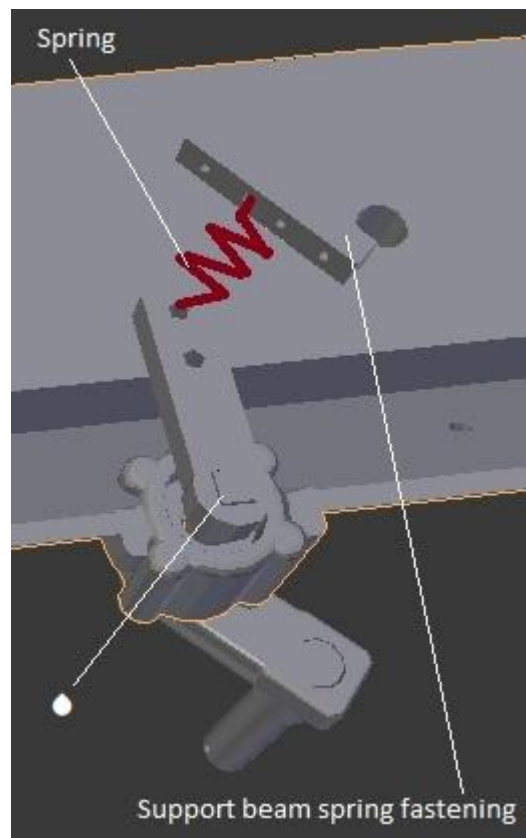
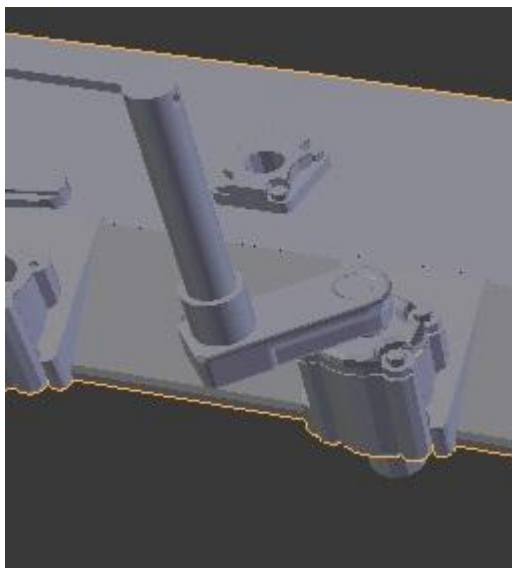
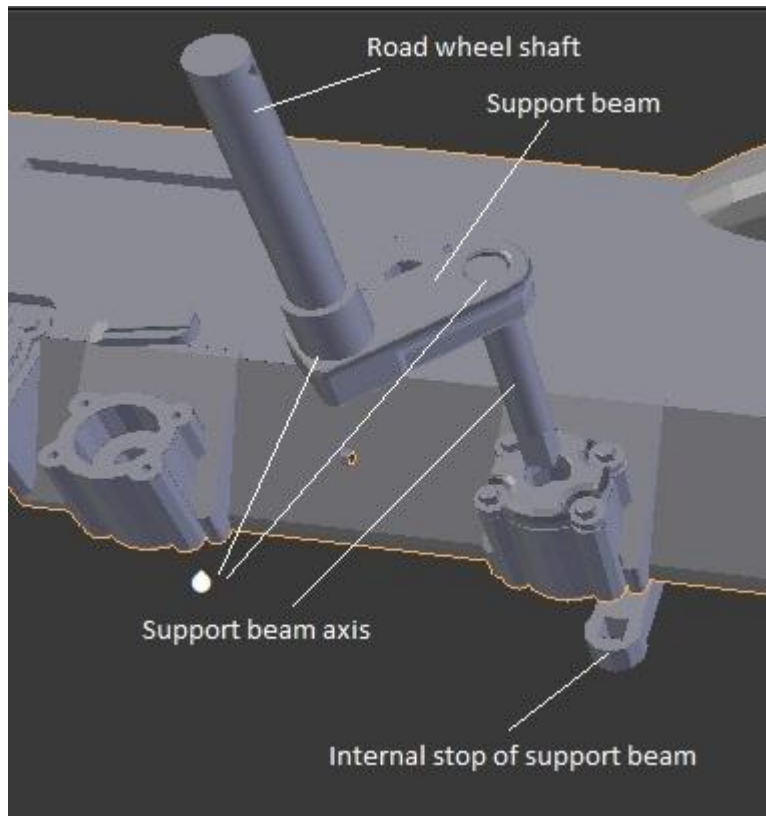
Set bearings and inner wheel spindle cap.

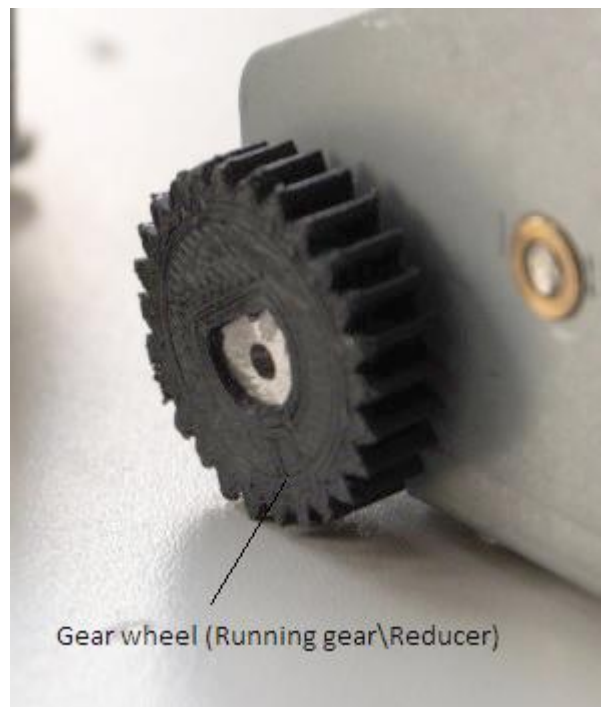
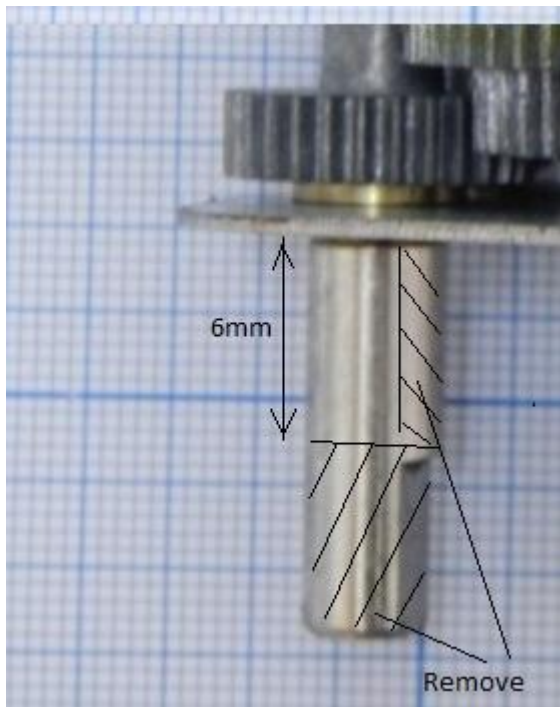
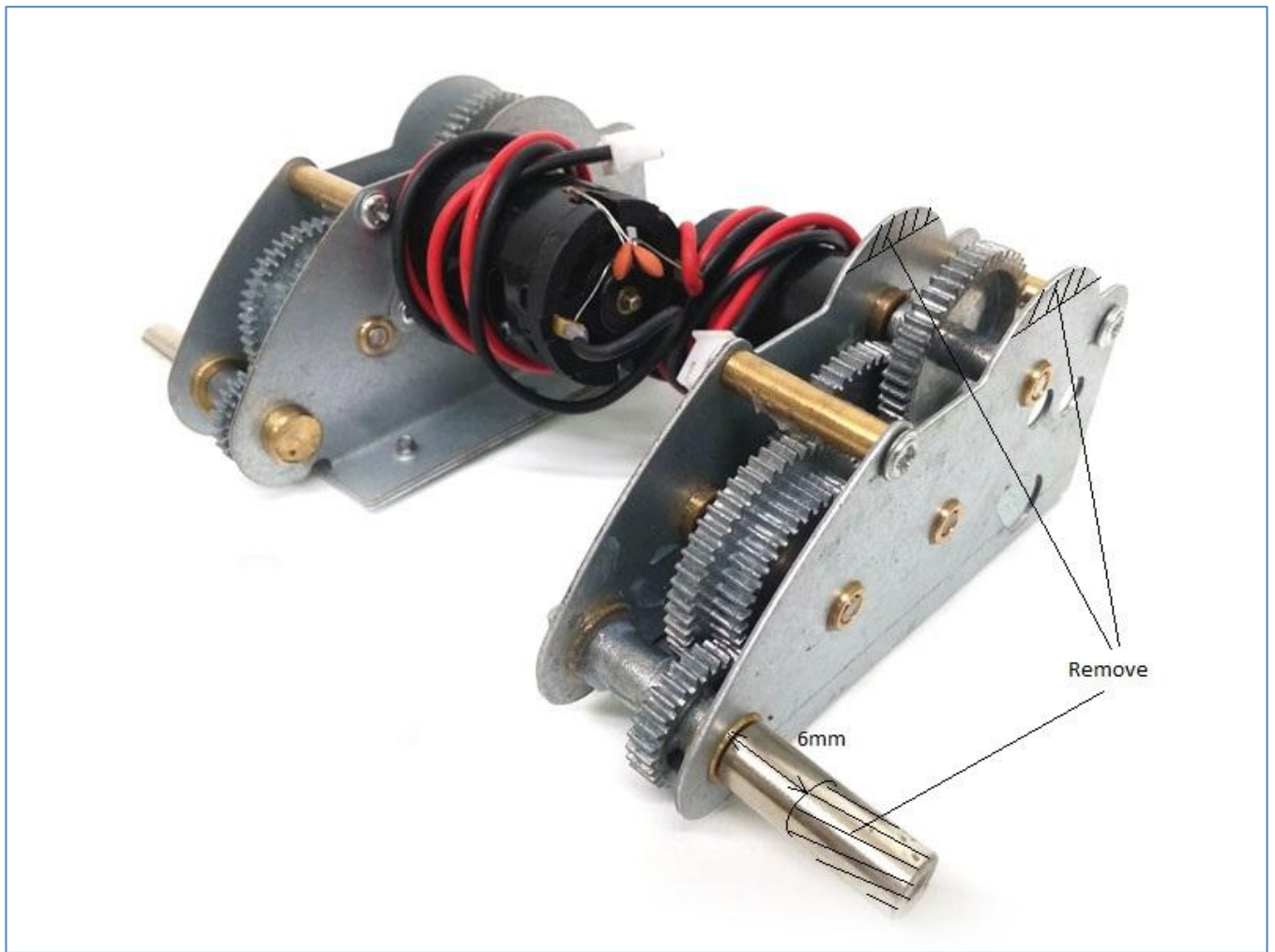


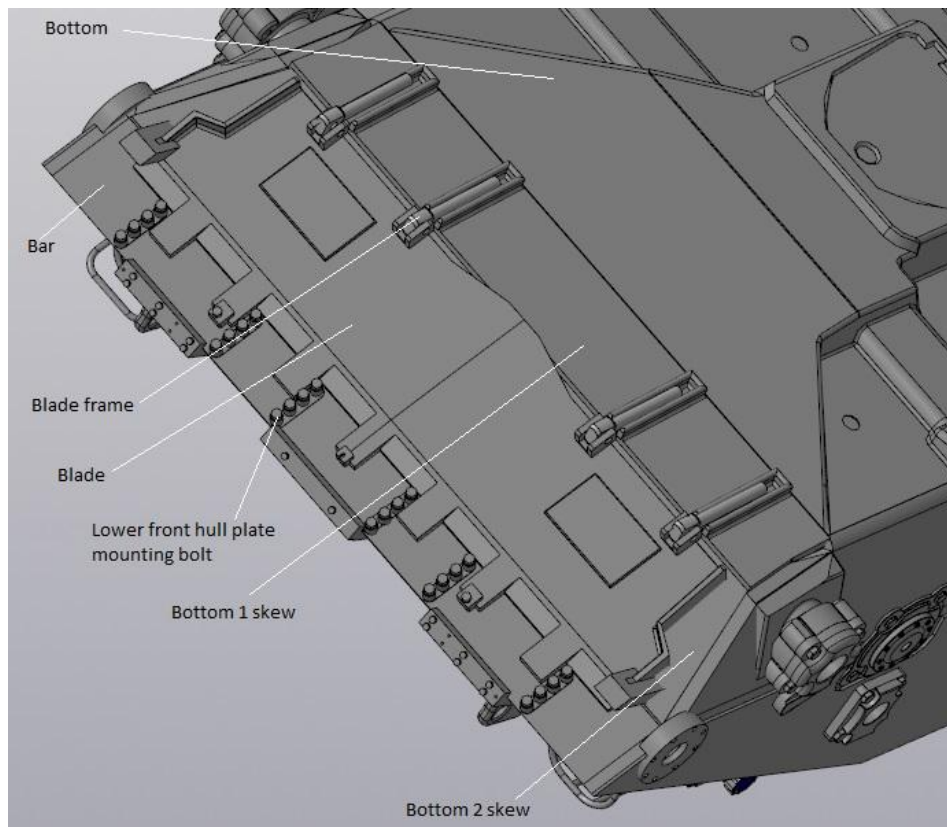
Bearings set into both side of road wheel.

Outer wheel spindle cap set after installing and fixing the road wheel.







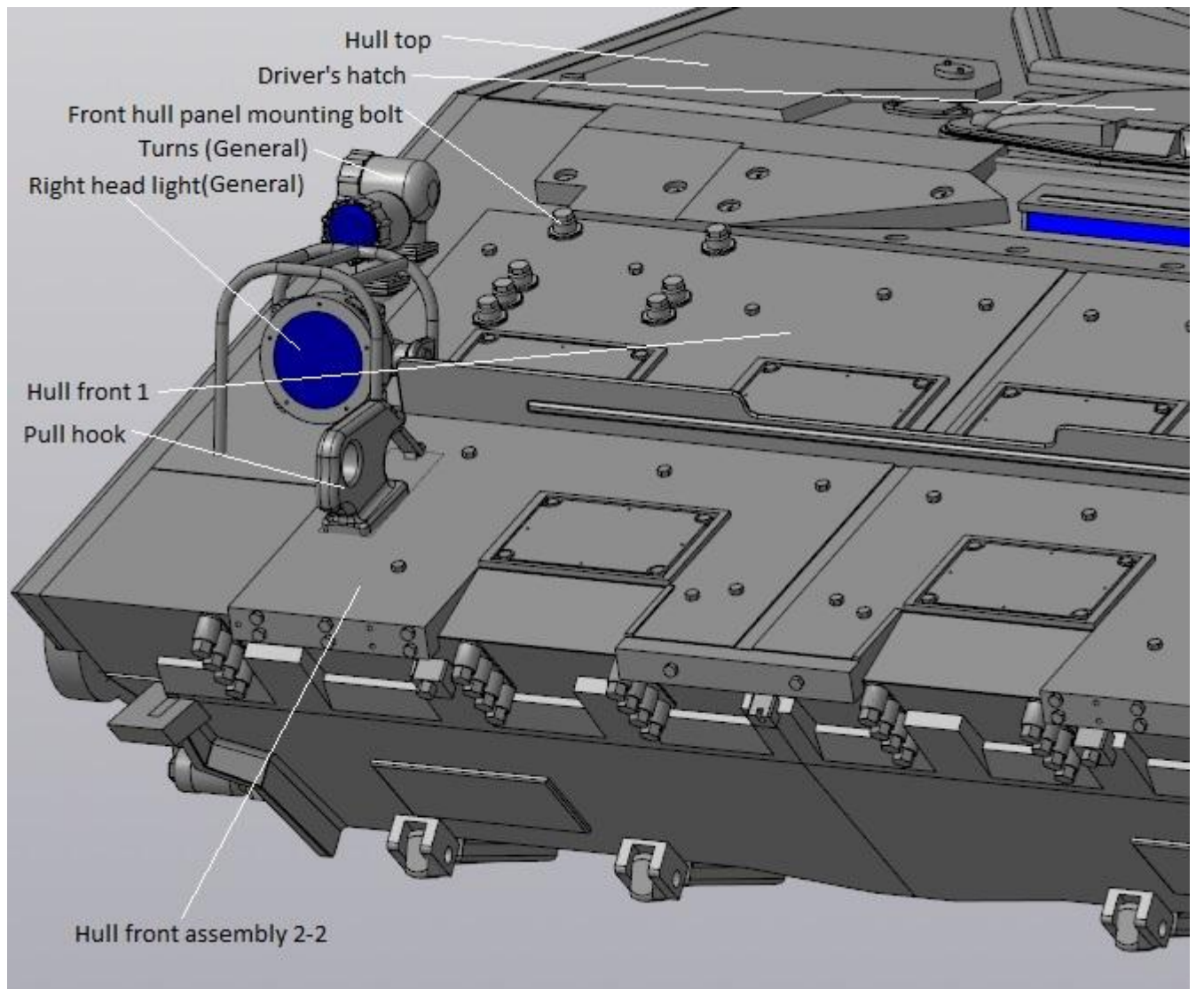
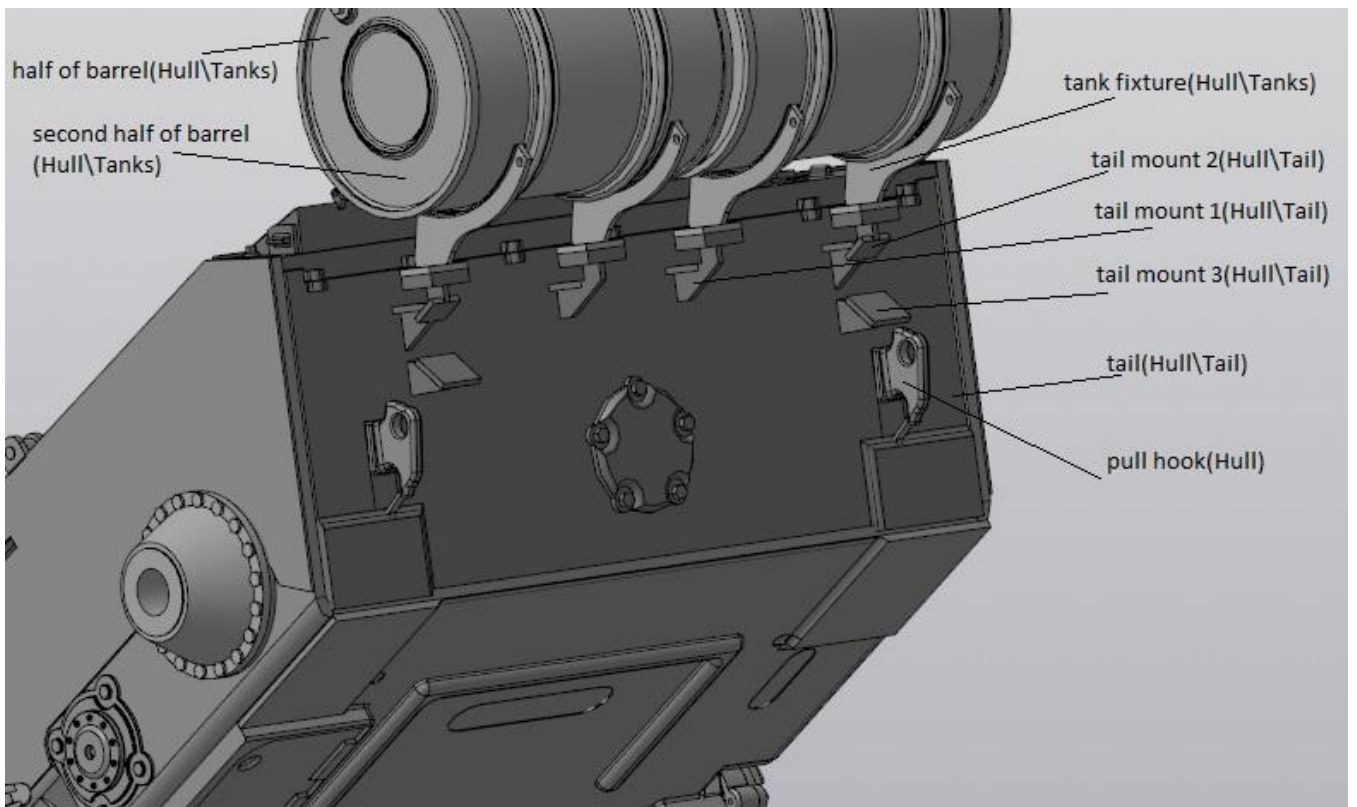


**Bottom 2 skew** - should be manually adjusted.

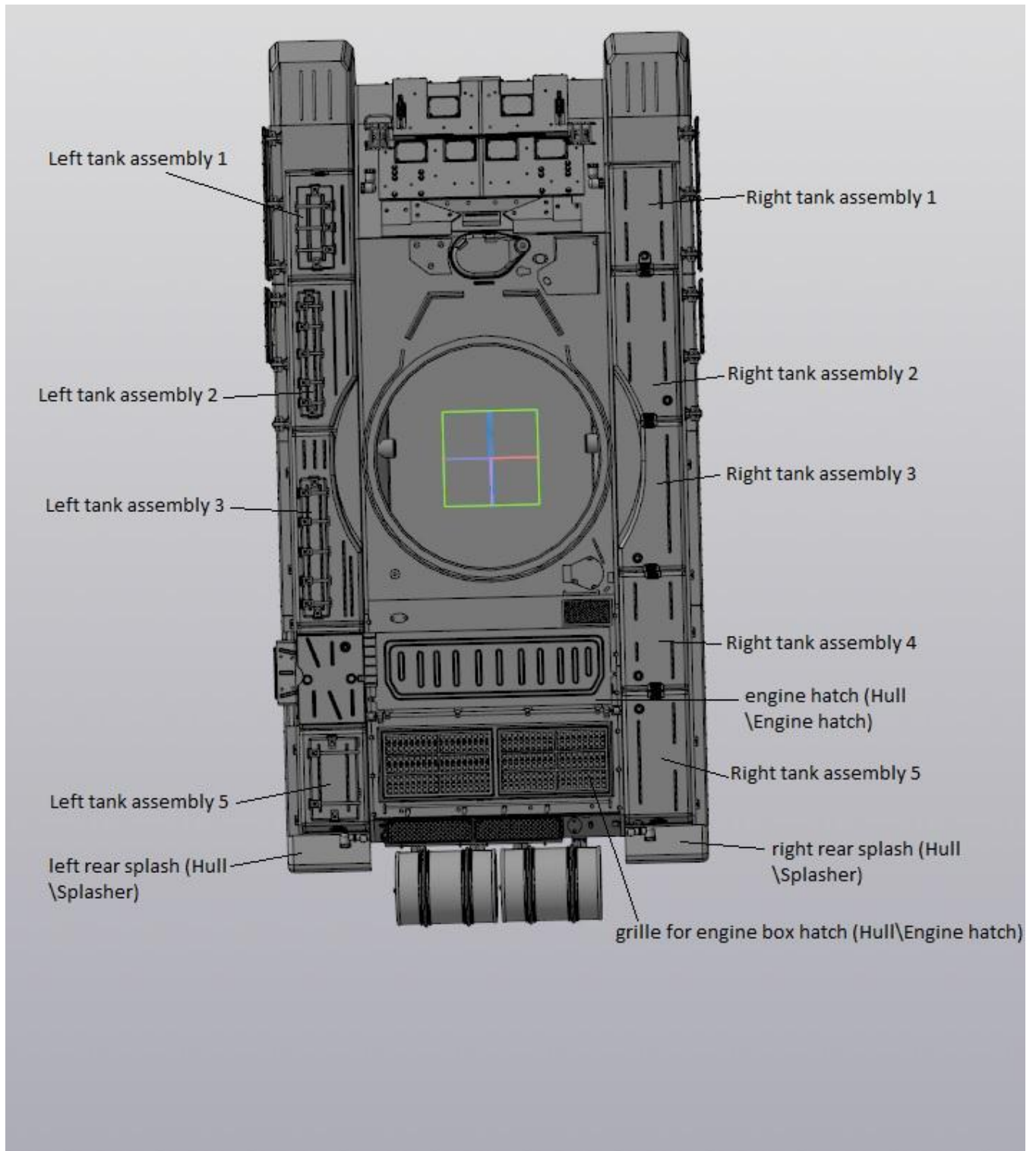
For convenience, the **hull front assembly 2-2** is divided into: **hull front 2-1** and **hull front 2-2**. You can use one or the other.

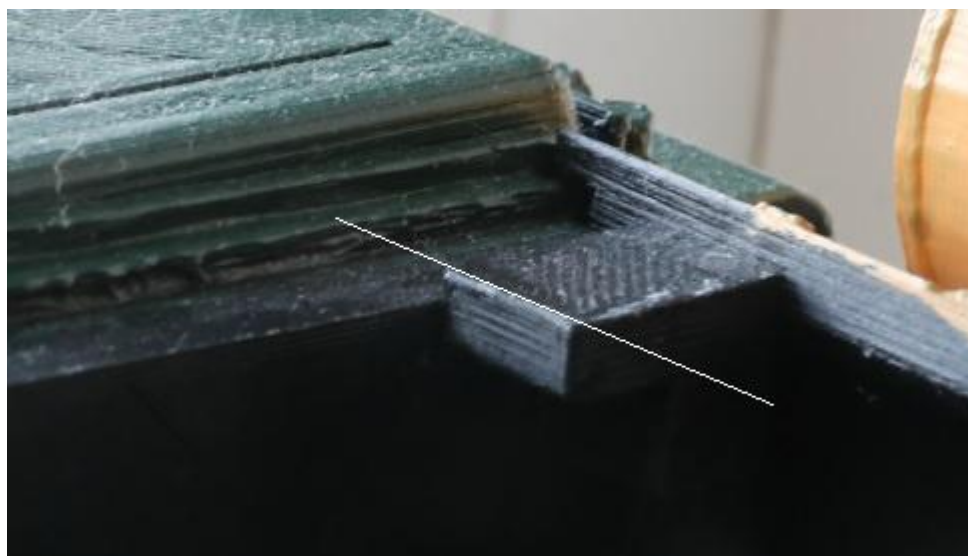
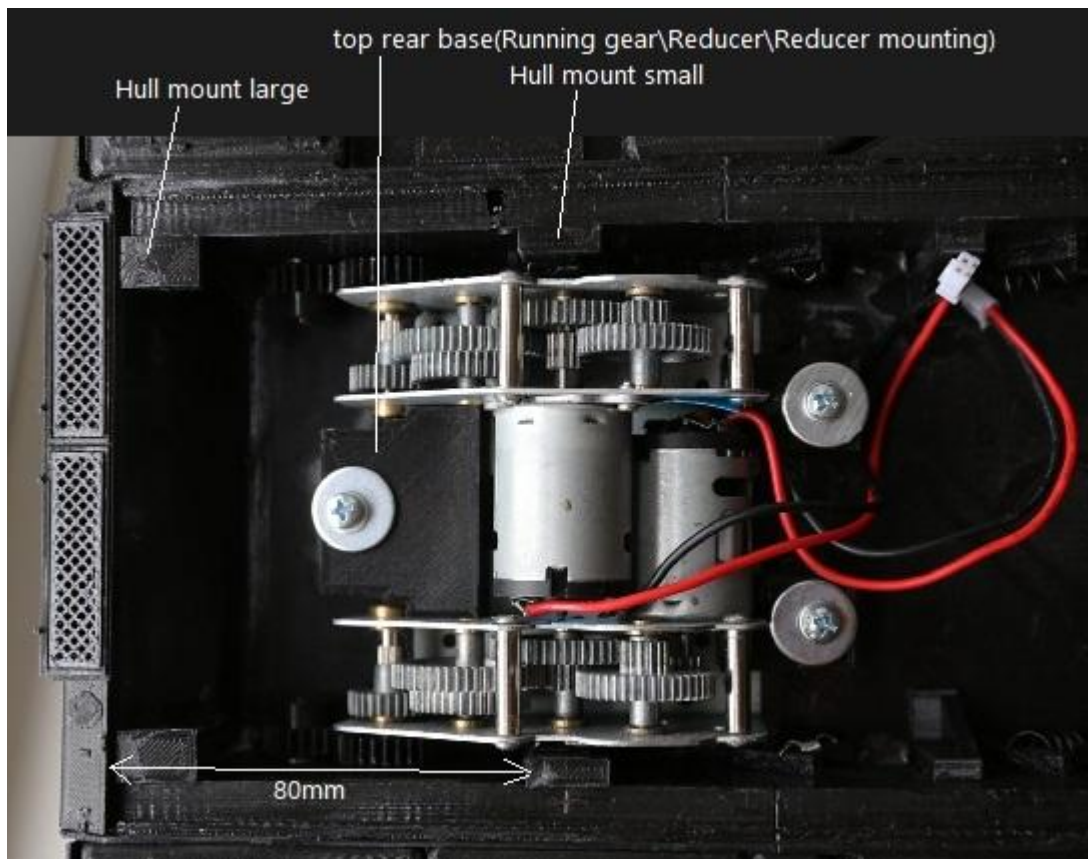
**Blade frame** – 4 qty.

**Front hull panel mounting bolt** – 14 qty.

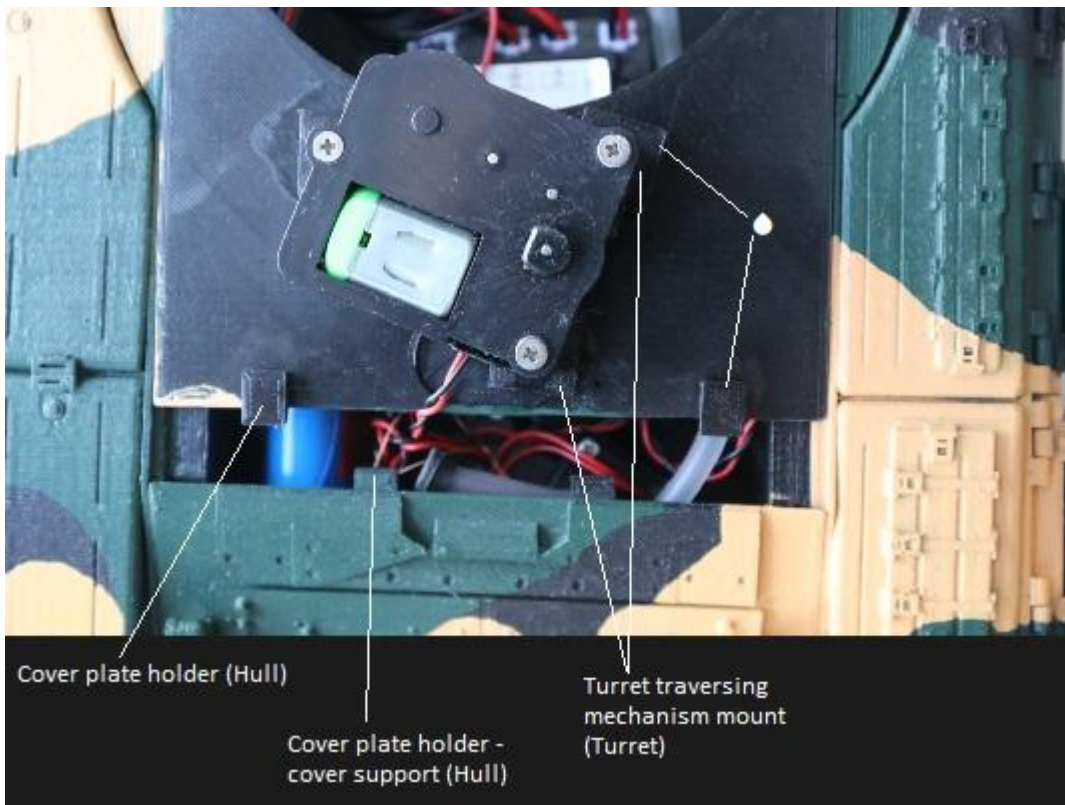
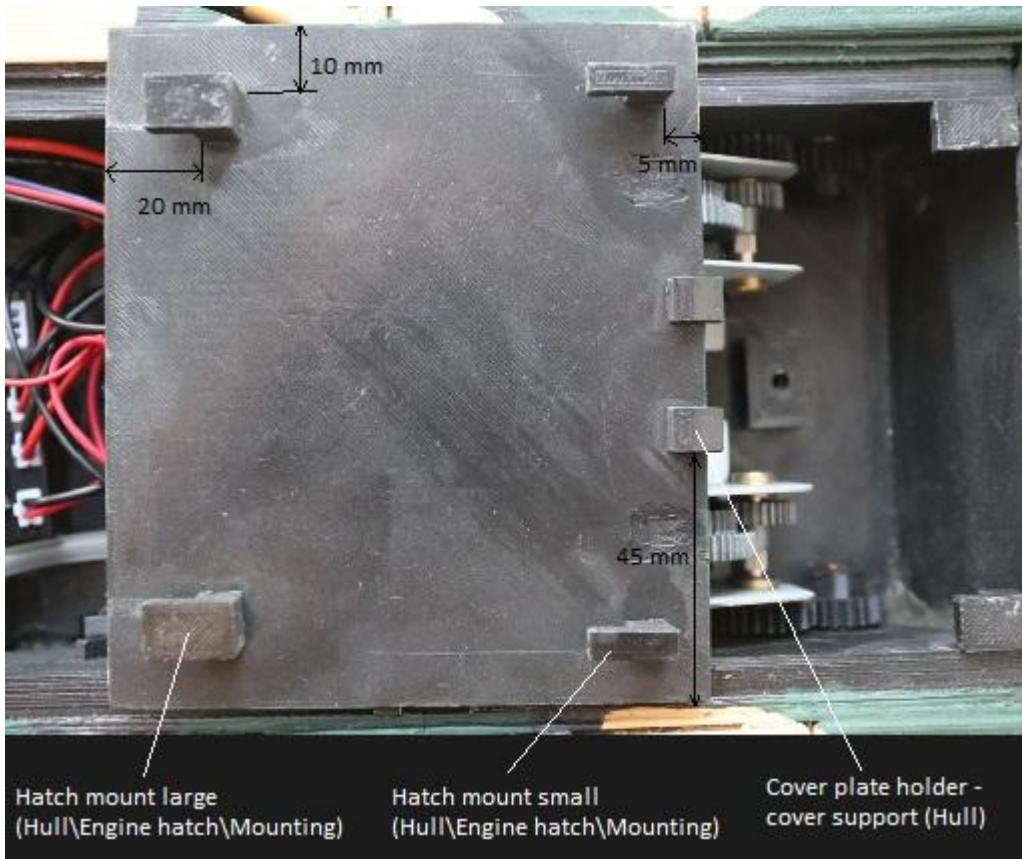


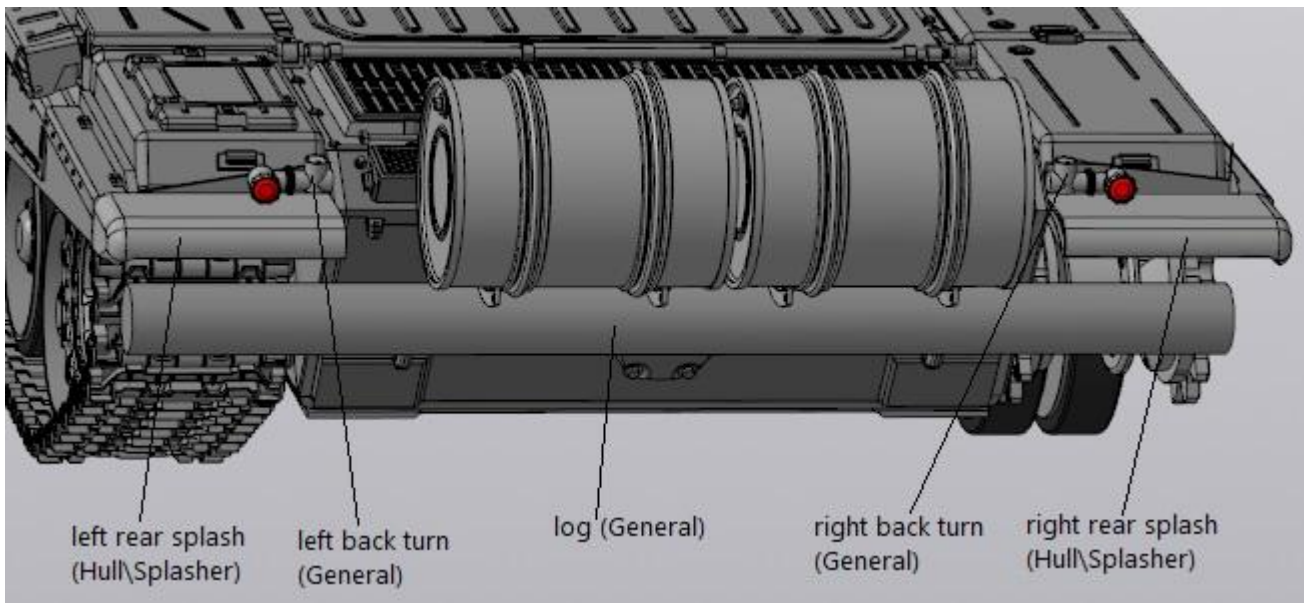
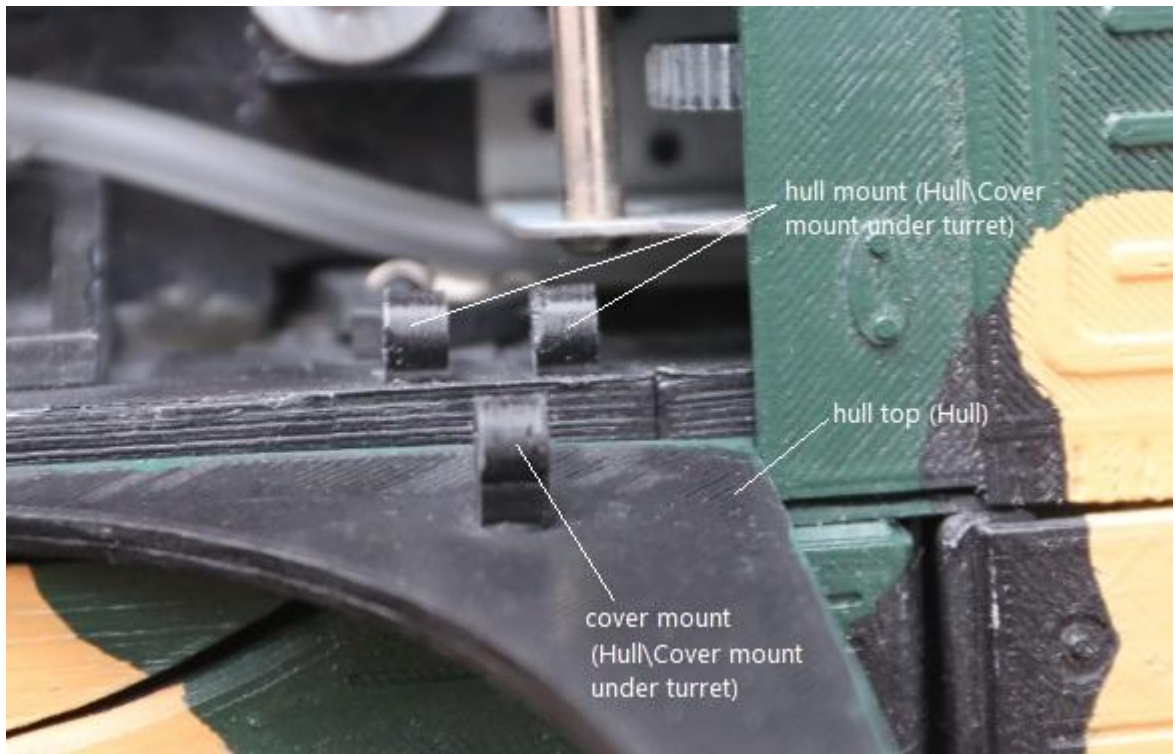
## Hull - Tanks

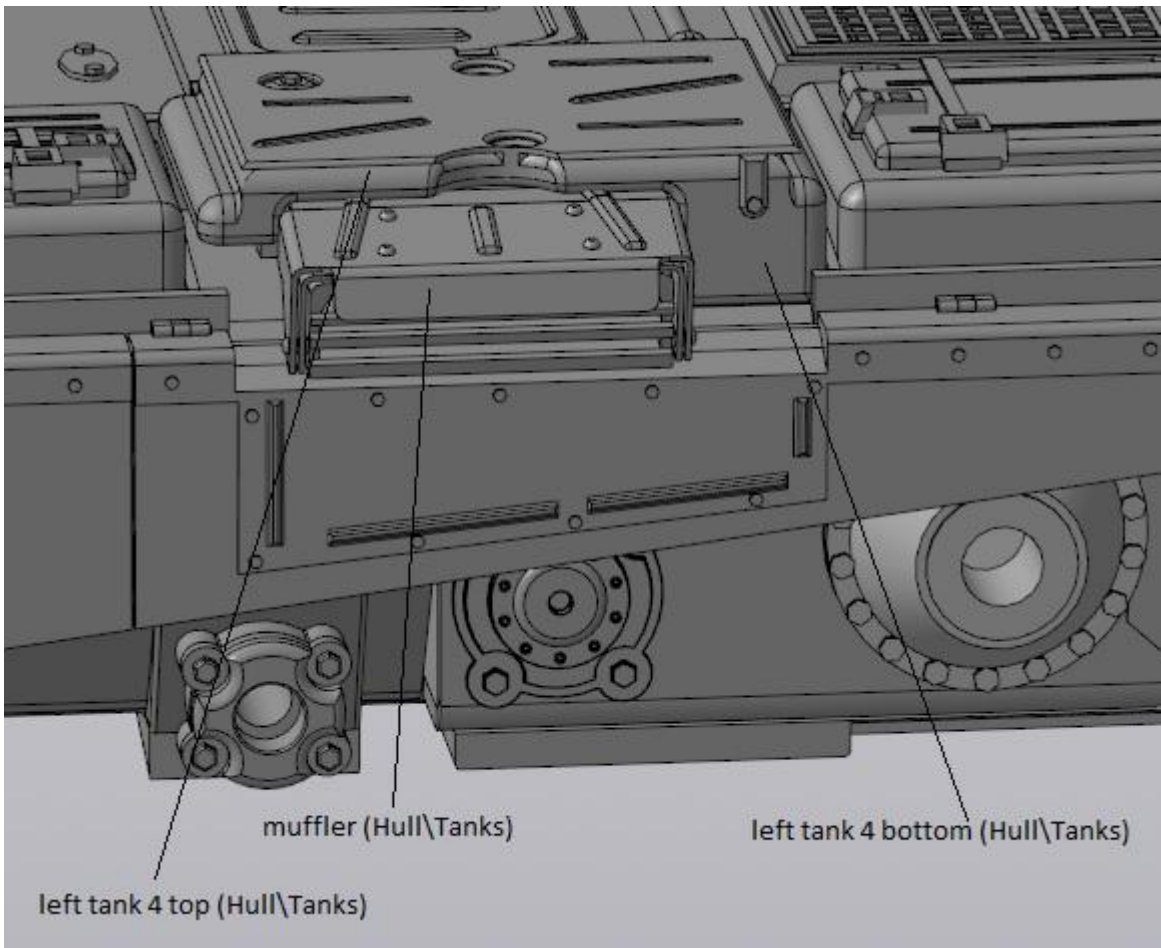
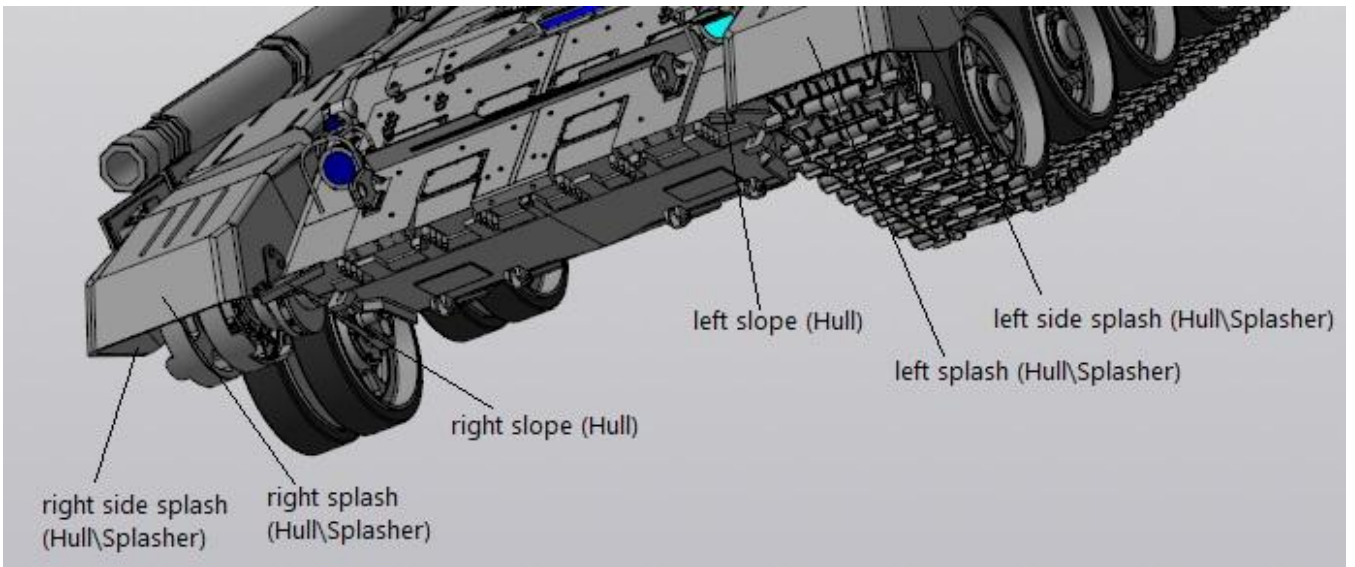




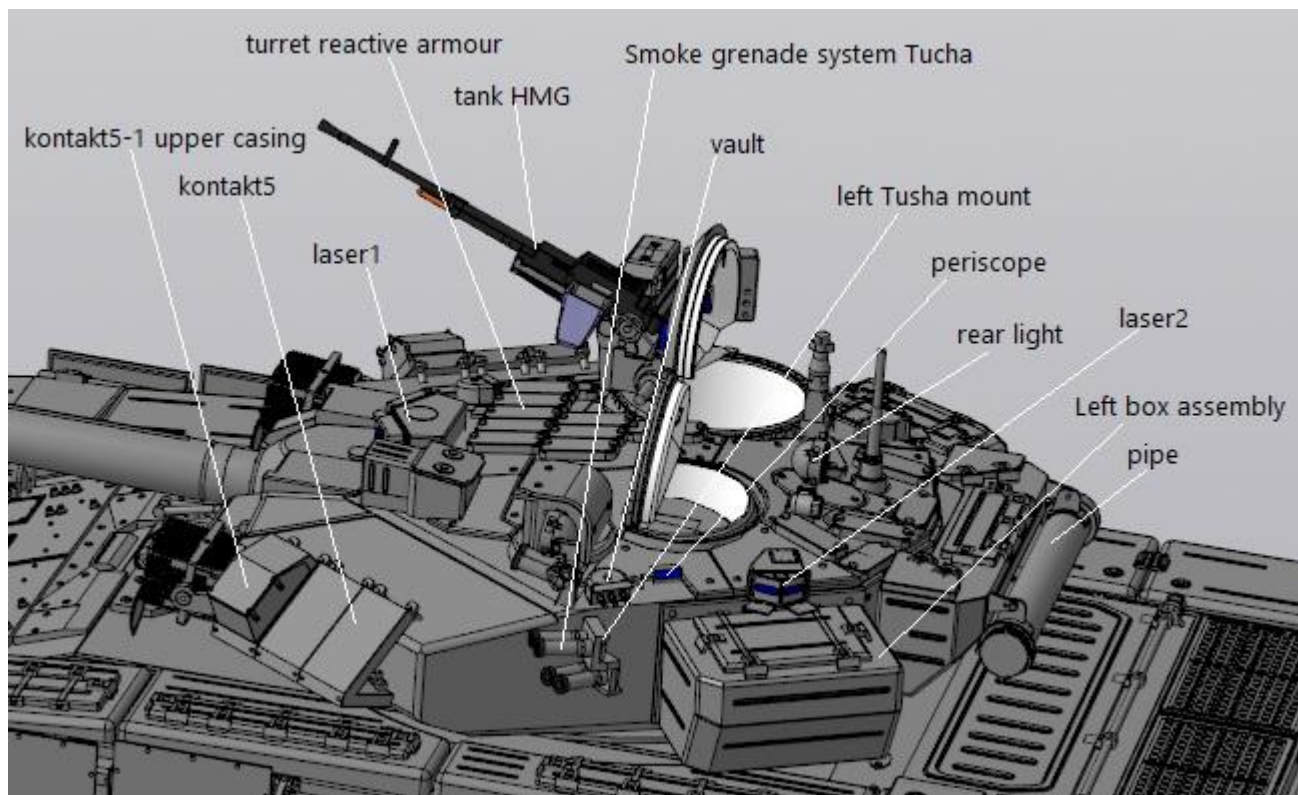
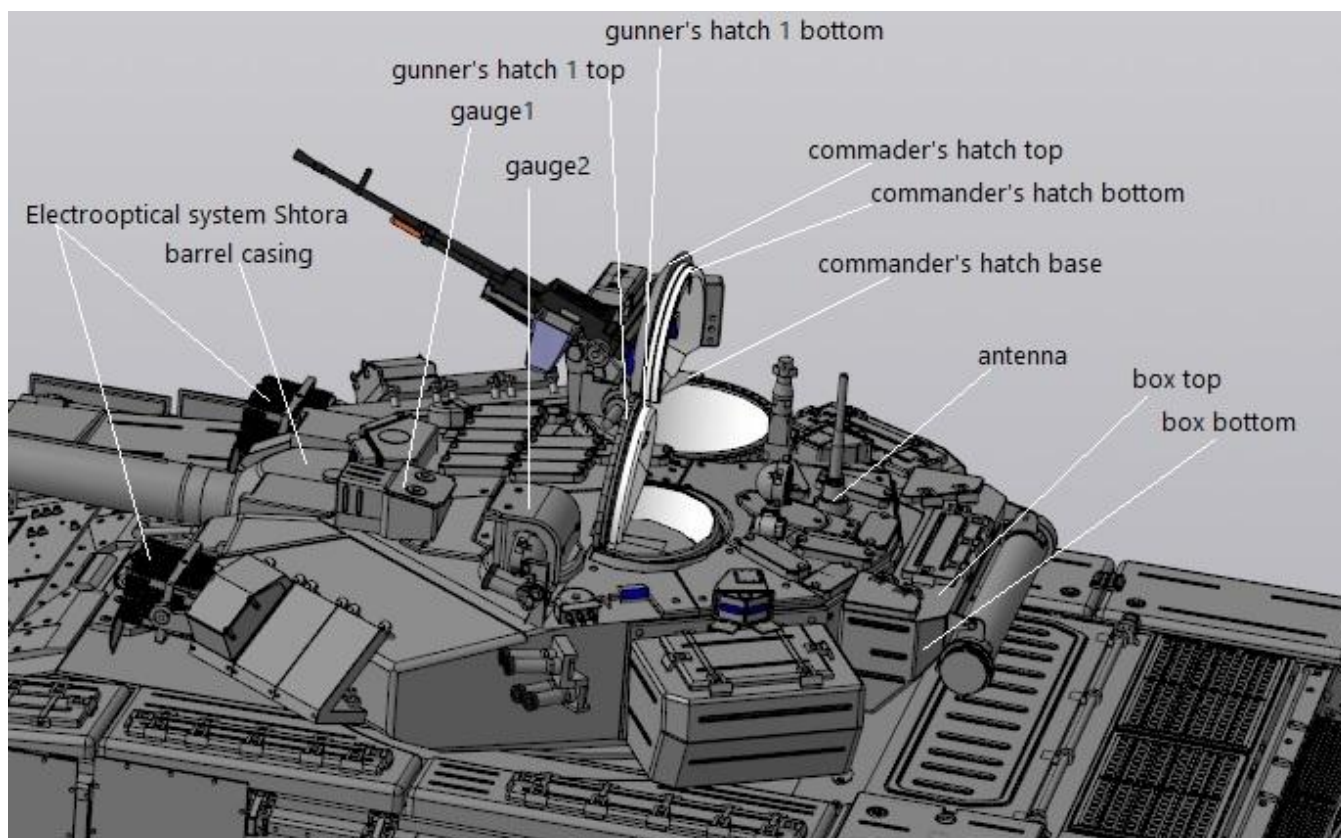


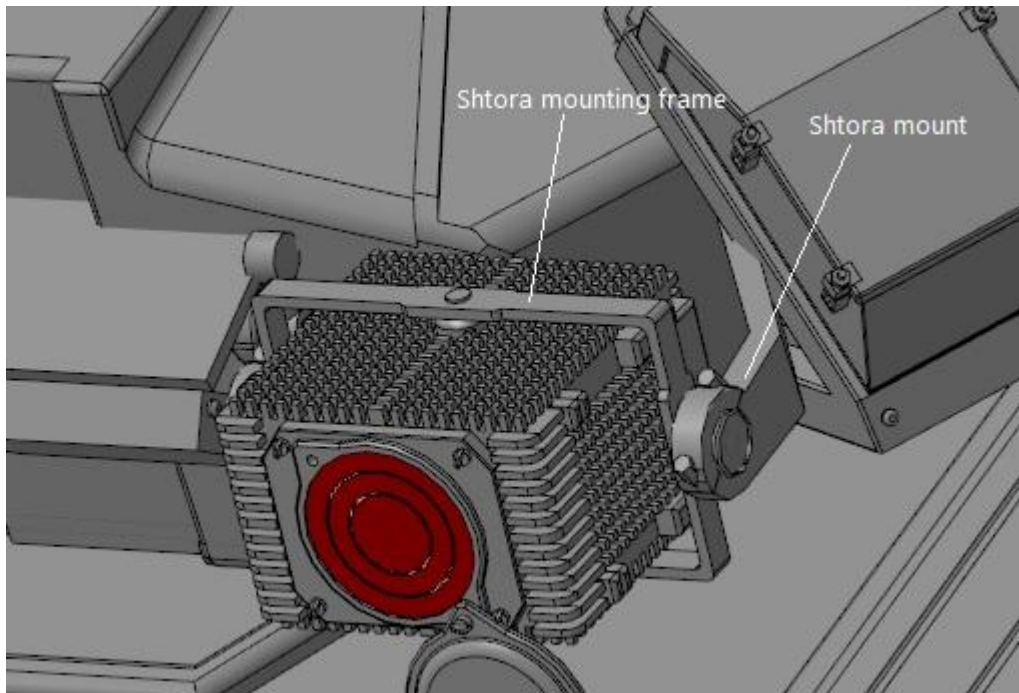
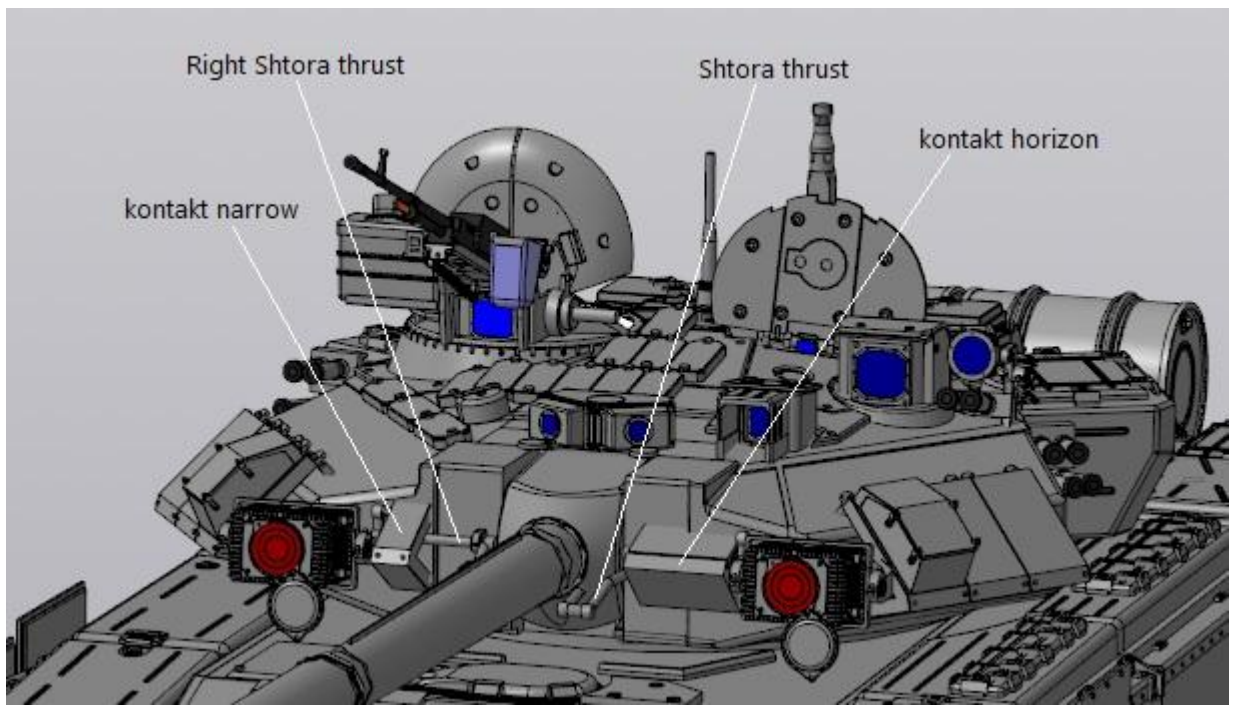


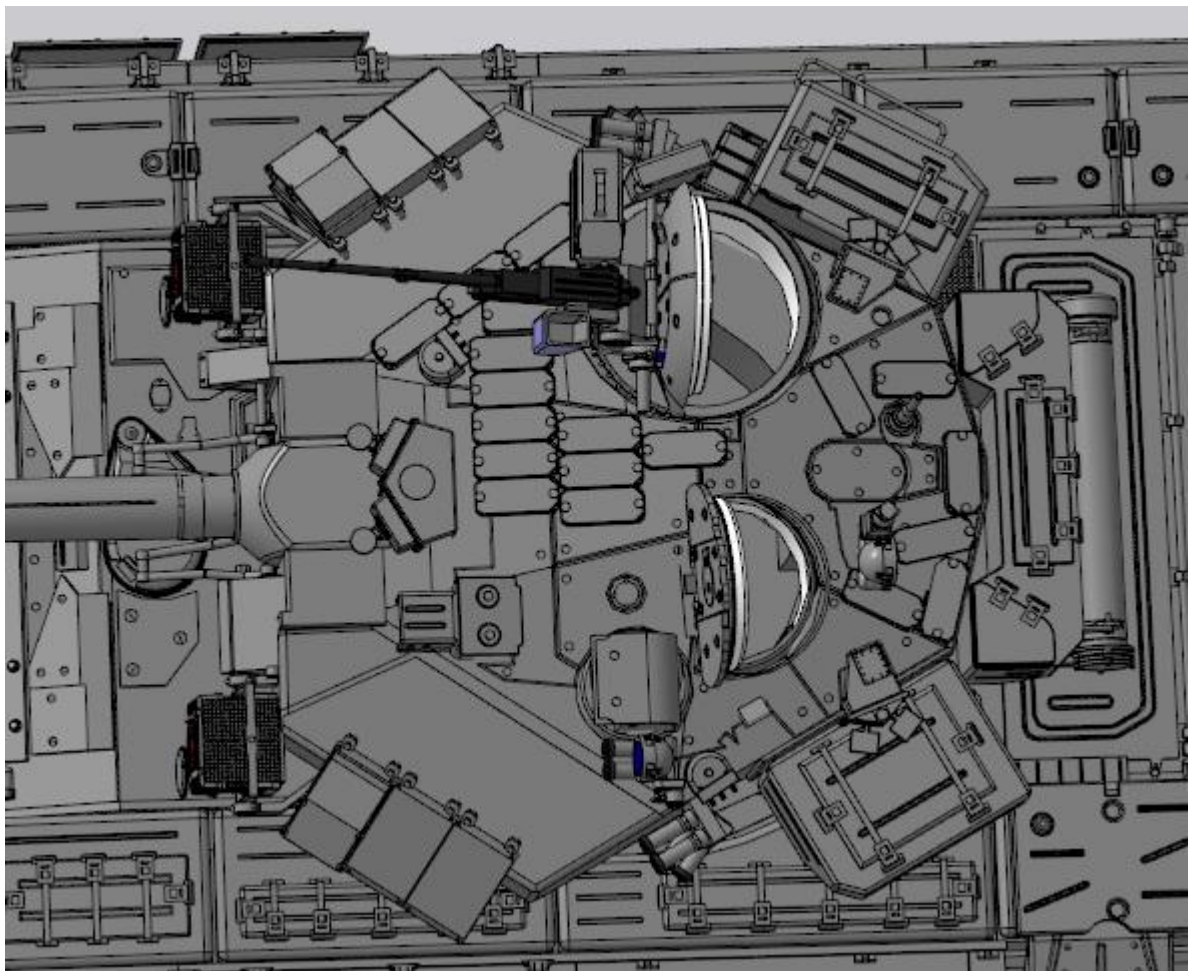
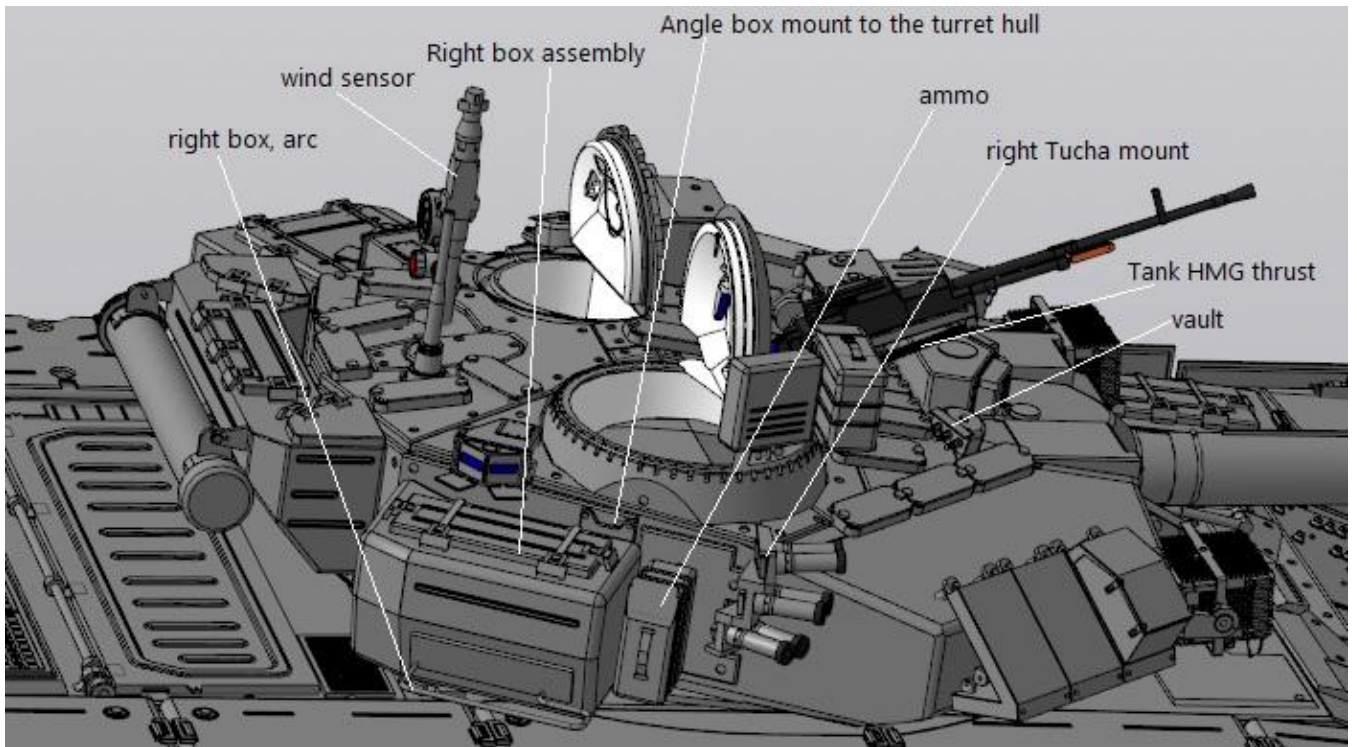


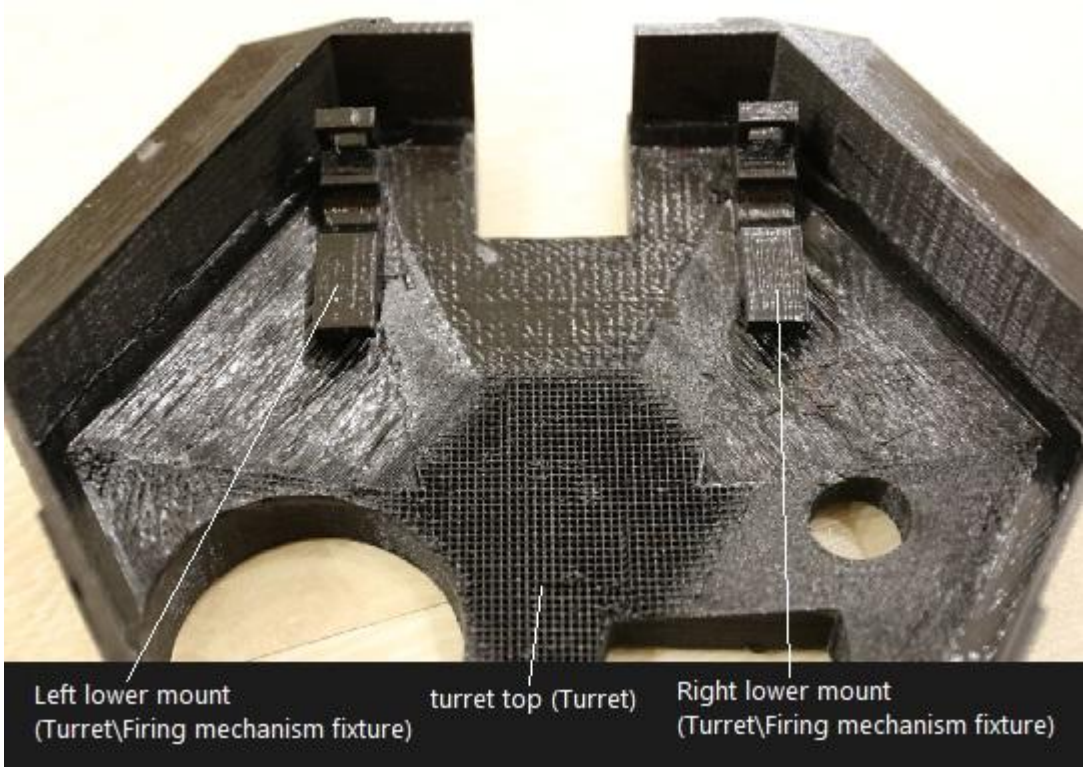


# Turret





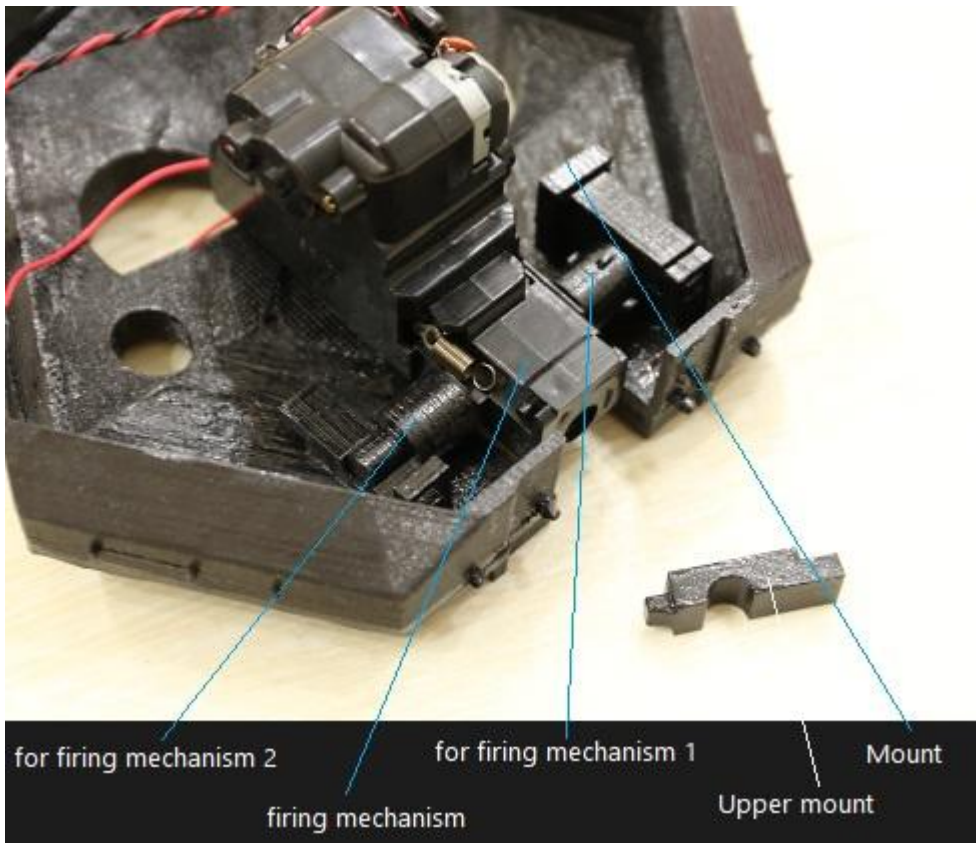




Left lower mount  
(Turret\Firing mechanism fixture)

turret top (Turret)

Right lower mount  
(Turret\Firing mechanism fixture)



for firing mechanism 2

for firing mechanism 1

Mount

firing mechanism

Upper mount