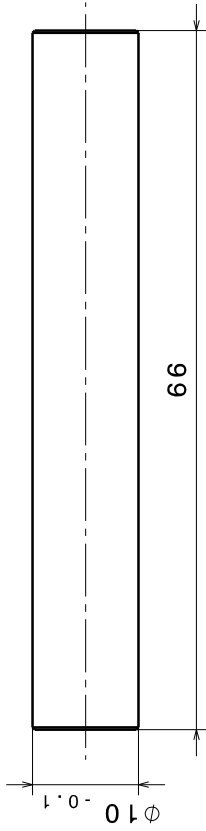
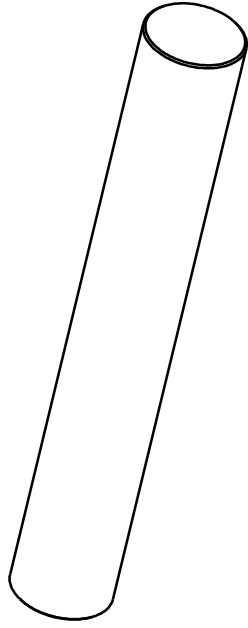


Seitenansicht

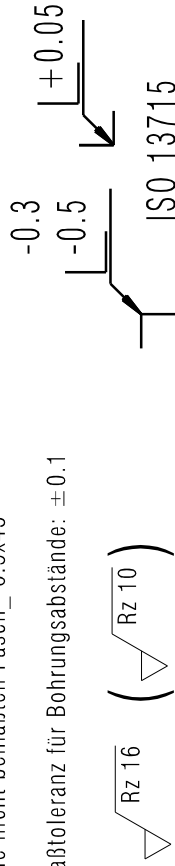


Isometrische Ansicht



Alle nicht bemaßten Fasen  $0.5 \times 45^\circ$

Maßtoleranz für Bohrungsabstände:  $\pm 0.1$



|   |                     |       |   |                                  |   |   |
|---|---------------------|-------|---|----------------------------------|---|---|
| SAE-Status/State  | Änd.-Nr./Change-No. | V6R19 | CAE-System-Version/<br>CAD-System-Version | CAE-Umgebung/<br>CAD-Environment | Hersteller / Material:<br>ALUMINPb          | Volumen /<br>Volume (mm <sup>3</sup> ): 5,182 cm <sup>3</sup> |
|   |                     |       | 3D-Referenzmodell / 3D-Referenzmodell     |                                  |   | Gewicht /<br>Mass (g): 0,014 kg                               |
|   |                     |       | Datum                                     | Name                             | Artikel / Title:<br><b>Welle Kupplung B</b> |   |
| Tolerierung / Tolerances:<br>Size ISO 14405 E             |                     |       | Bev.-Nr./<br>Order No.                    | 02.01.2019                       | Ers.-Zögl. / Replaces:                      |   |
| Allgemeintoleranzen / Gen. Tolerances:<br>DIN ISO 2768-mK |                     |       | Druck/<br>Print                           | 02.01.2019                       | Zögl.-Nr. / Drawing No.                     |   |
|   |                     |       | Freige/<br>Released                       |                                  | Teilnummer /<br>(Blatt/Page)                |   |
|   |                     |       |   |                                  | Index / Index                               |   |
|   |                     |       |   |                                  | Documenttyp /<br>Type of Document           |   |
|   |                     |       |   |                                  | Format / Size:<br>A4                        |   |
|   |                     |       |   |                                  | Massstab/Scale<br>2:1                       |   |