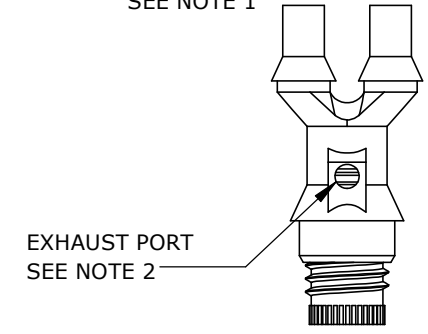


ITEM NO.	PART NUMBER	DESCRIPTION	QTY.
1	01-STRIDR	PLATFORM	1
2	02-STRIDR	STRUCTURAL STRUT	2
3	03-STRIDR	SCREW	1
4	04-STRIDR	FLOATER	2
5	05-STRIDR	VALVE	1
6	06-STRIDR	RUDDER	2
7	K1-F8	SOCKET HEAD CAP SCREW M3X8	4
8	K1-WSR	WASHER M3	4
9	SEAL	BALLOON NOZZLE	1

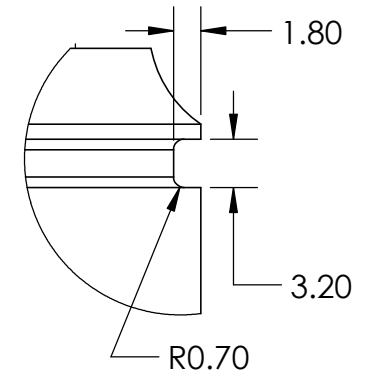
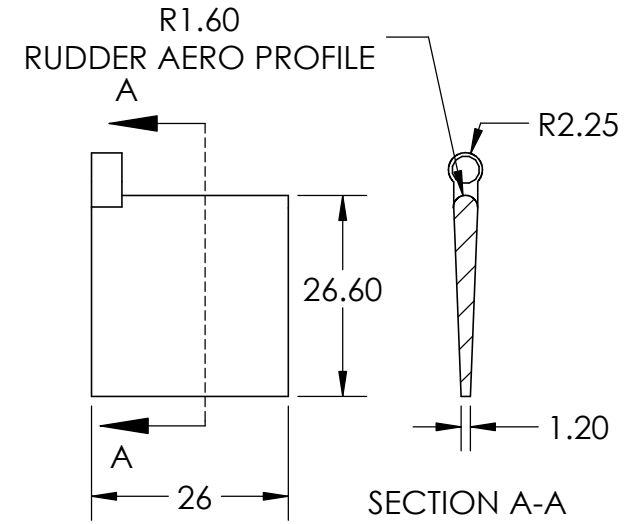
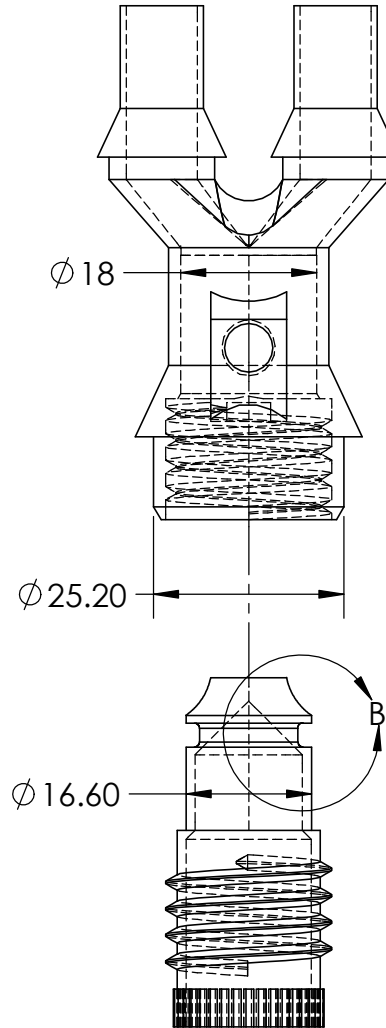
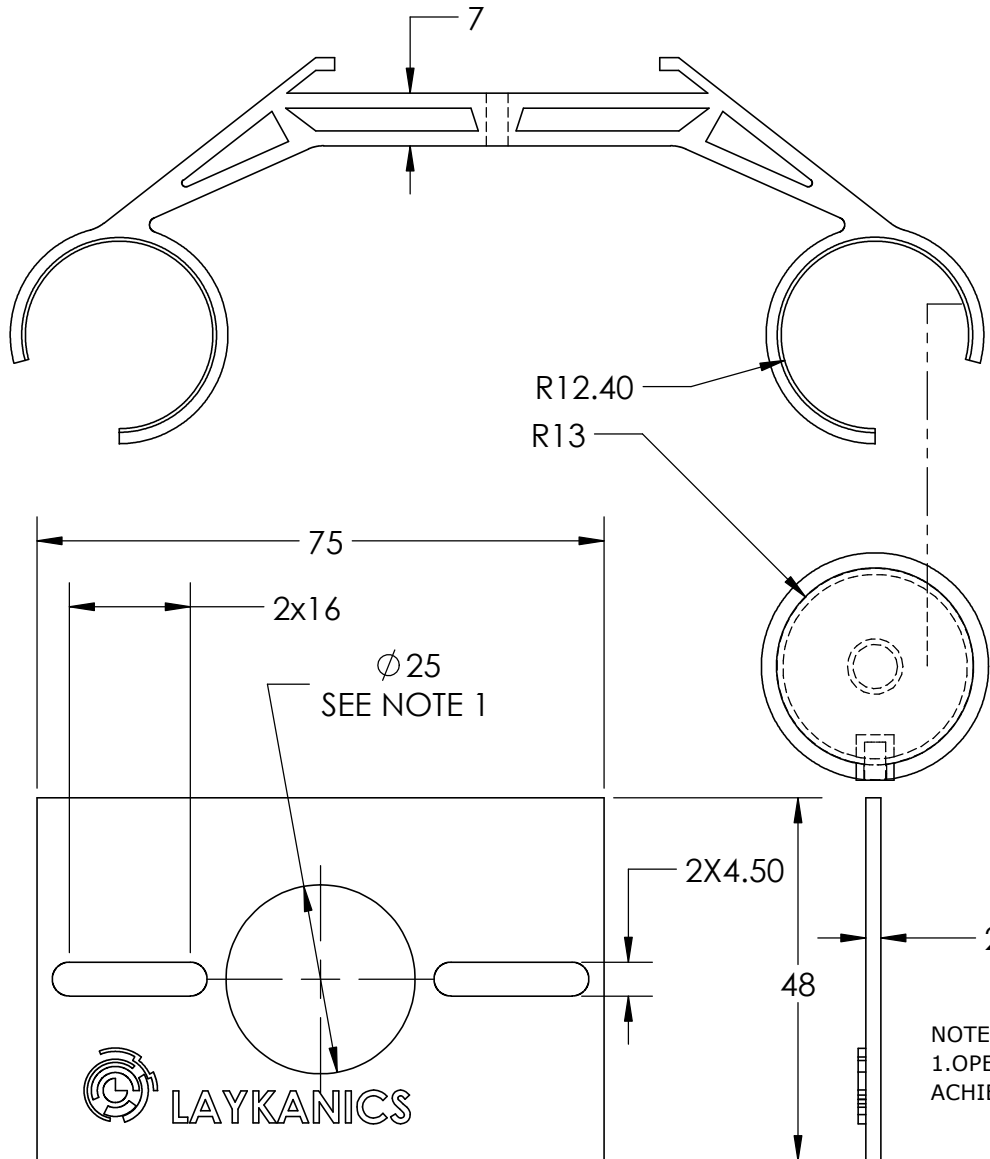
VALVE SUB-ASSEMBLY  
SEE NOTE 1



- NOTES:  
 1. VALVE SUB-ASSEMBLY MUST BE TAKEN OUT OF PLATFORM DURING INFLATION  
 2. USE THIS PORT TO BLOW AIR INTO THE BALLOONS  
 DO ONE AT A TIME BY CLOSING WITH FINGERS  
 THE BALLOON NOZZLE OF THE BALLOON NOT BEING INFLATED

MATERIAL: ABS, PLA	TITLE: <b>STRIDR</b>	REV: <b>A</b>
DATE: NOV'14		SIZE: A4
DIMENSIONS IN: mm		
SCALE: 1:2		

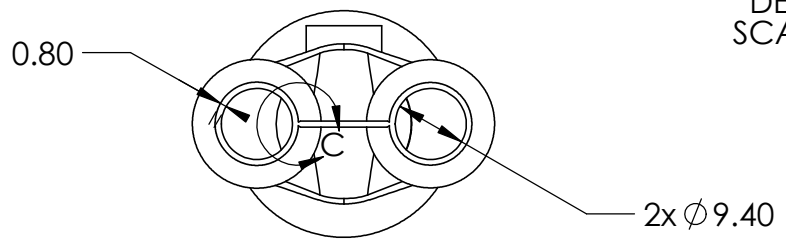
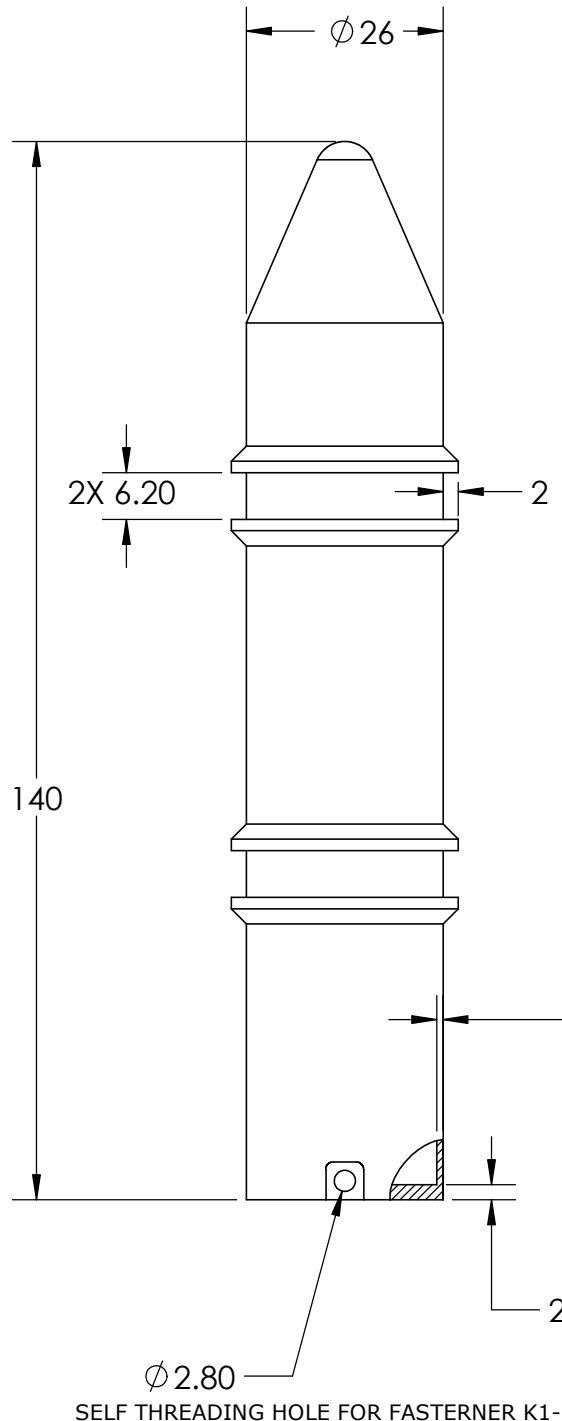
ASSEMBLY FITS ON DETAIL:



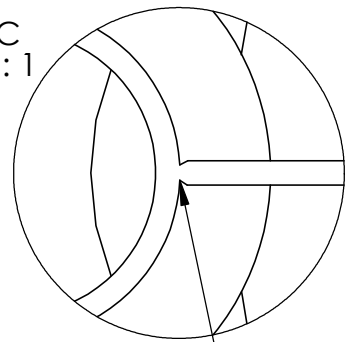
DETAIL B: SEAL GROOVE SCALE 2 : 1

NOTES:  
1. OPEN SLIGHTLY THIS DIAMETER TO  
ACHIEVE A SNUG FIT WITH VALVE (ITEM 05-STRIDR)

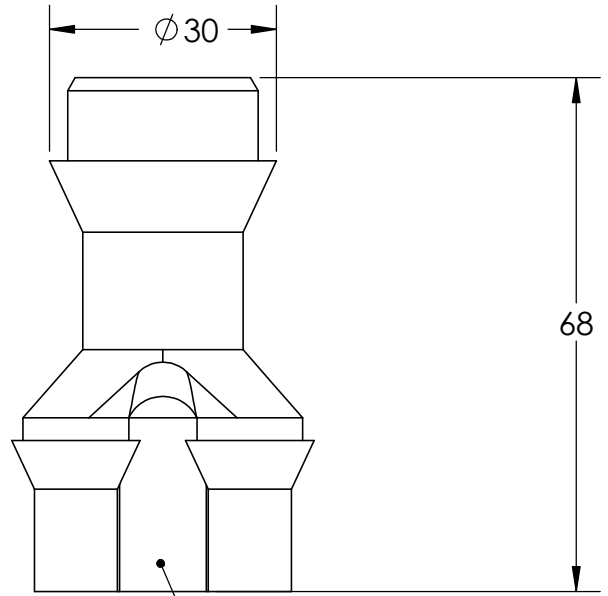
MATERIAL: ABS, PLA	TITLE: <b>STRIDR</b>	REV: <b>A</b>
DATE: NOV'14		SIZE: A4
DIMENSIONS IN: mm		
SCALE: 1:1	<b>LAYKANICS</b>	SHEET 2 OF 3



DETAIL C  
SCALE 4:1



CUT  
ALONG THIS  
EDGE TO REMOVE  
RIB



THIS RIB IS ONLY TO AID  
PRINTING PROCESS  
REMOVE WHEN POST-PROCESSING

SELF THREADING HOLE FOR FASTENER K1-F8

MATERIAL: ABS, PLA	TITLE: <b>STRIDR</b>	REV: <b>A</b>
DATE: NOV'14		SIZE: A4
DIMENSIONS IN: mm		
SCALE: 1:1	<b>LAYKANICS</b>	SHEET 3 OF 3