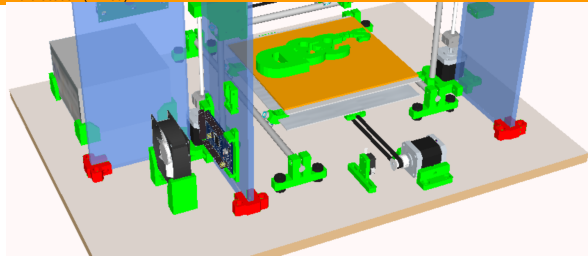
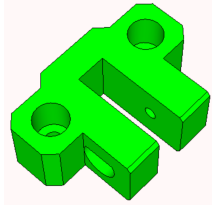


Part Name (stl) - Comments

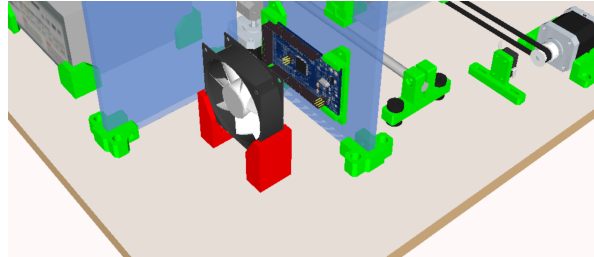
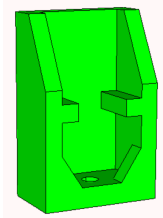
Image

Part location (in Red)

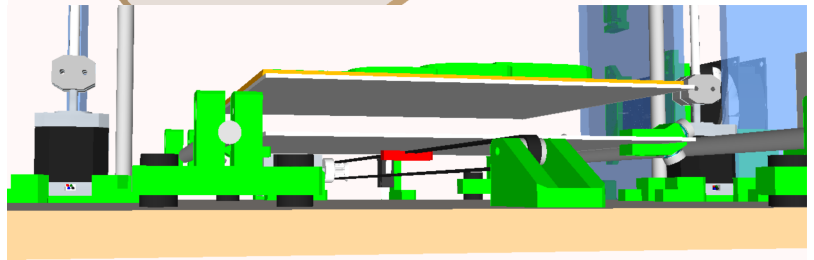
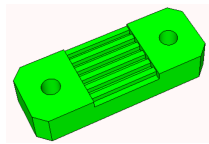
8mm plate bed bracket v2.03  
- 3 per printer



80mm fan mount v2.01  
- 2 per printer



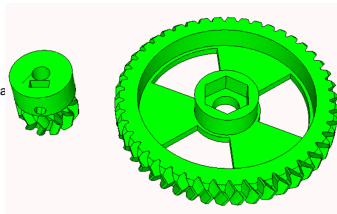
y-axis belt clamp  
- 1 per printer



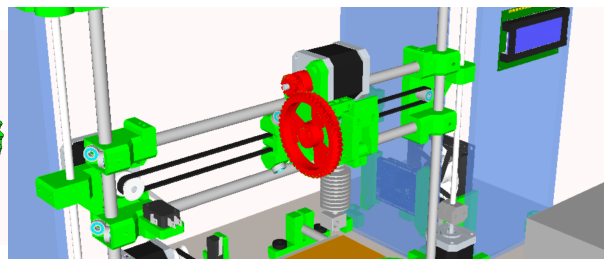
y-axis belt clip v2.02  
- 1 set per printer



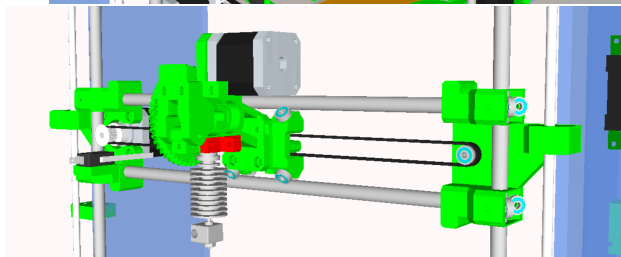
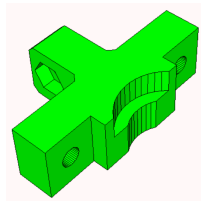
Center of Y-Axis belt (under side)



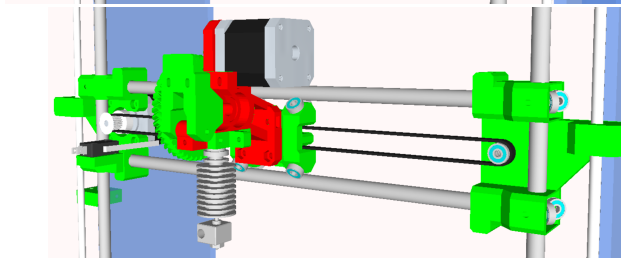
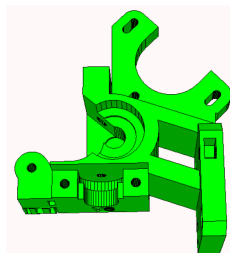
Big and Small Herring Bone Gear Nucleus  
- 1 set per printer



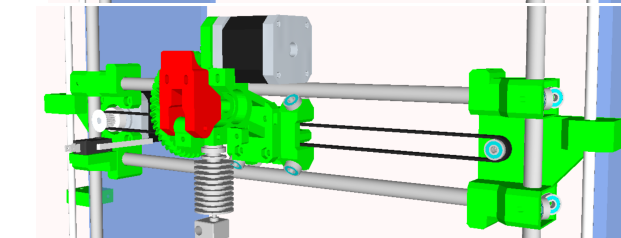
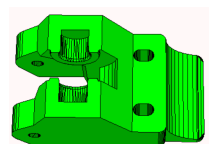
i3R\_Compact\_E3Dv6\_Clamp\_01  
- 1 per printer



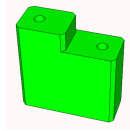
i3R\_Compact\_E3Dv6\_Extruder\_3mm\_01  
- 1 per printer



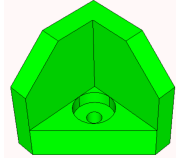
i3R\_Compact\_Guidler\_3mm\_01  
- 1 per printer



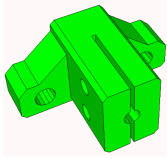
LCD spacer v2.01  
- 4 per printer  
(Between LCD and 8mm perspex plate)



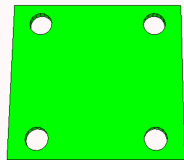
PSU corner  
- 4 per printer



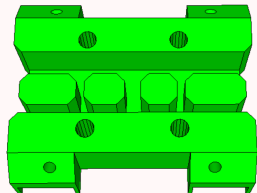
x-cable mgmnt v2.01  
- 1 per printer



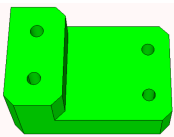
x-carriage 2mm spacer v2.05  
- 1 per printer



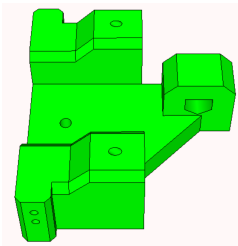
x-carriage v2.05  
- 1 per printer



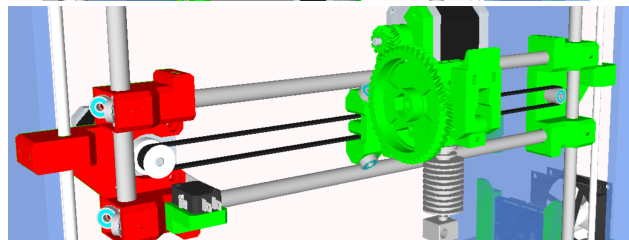
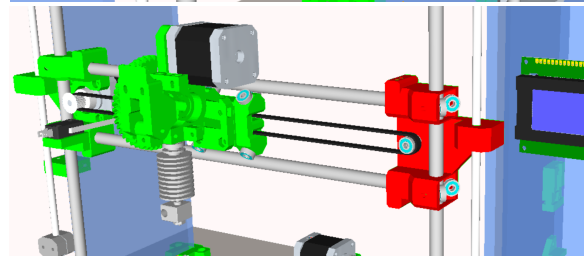
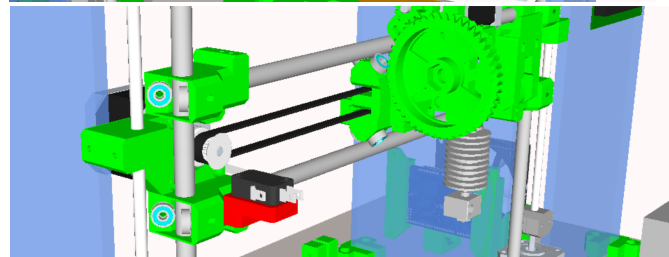
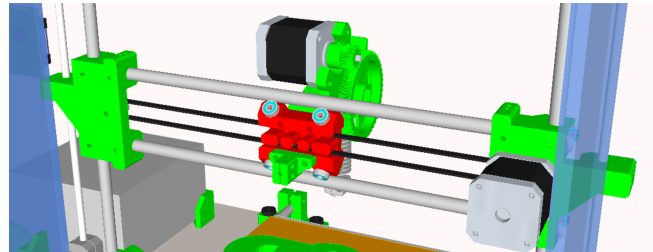
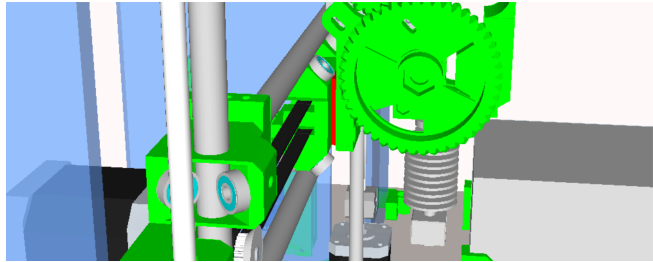
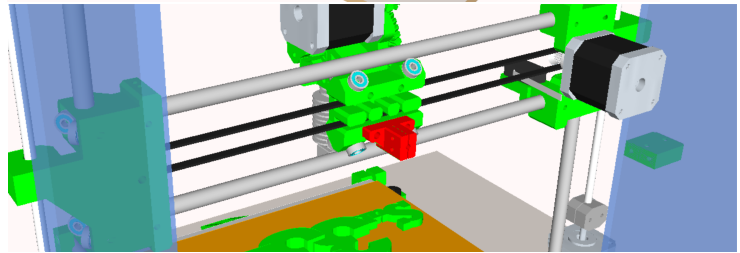
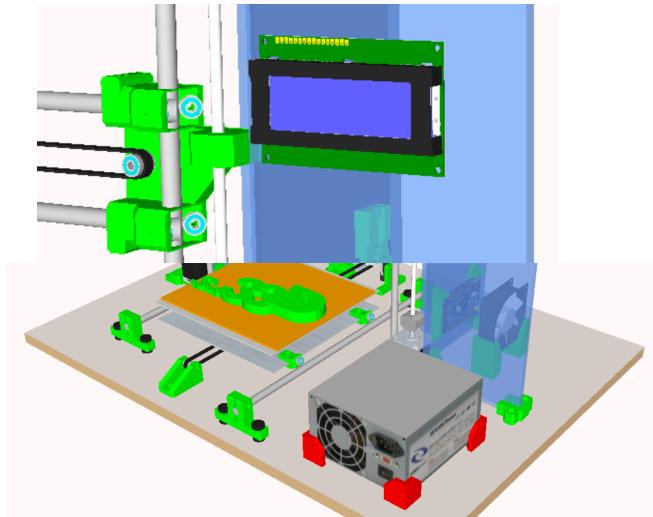
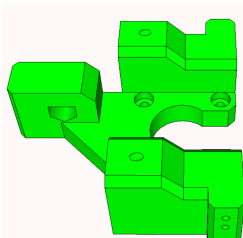
x-endstop v2.03  
- 1 per printer



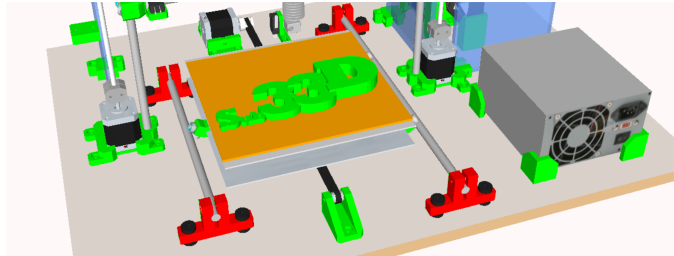
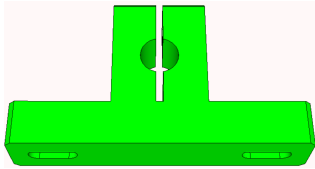
x-idler mount v2.05  
- 1 per printer



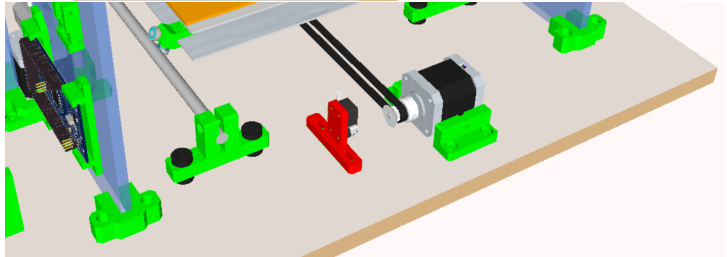
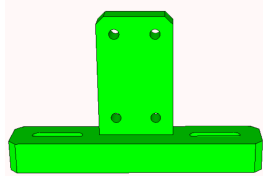
x-motor mount v2.05  
- 1 per printer



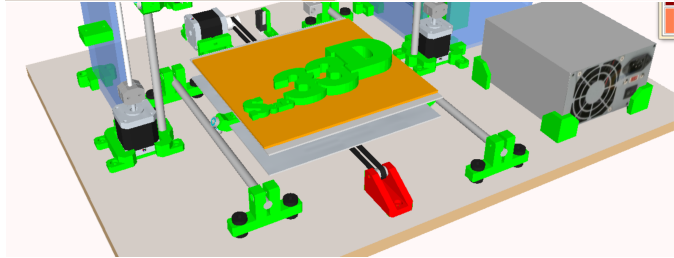
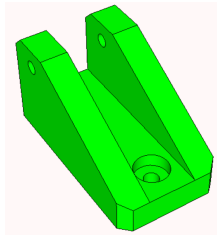
y-axis bracket v2.03  
- 4 per printer



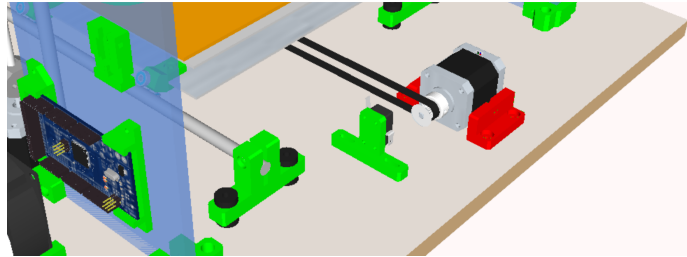
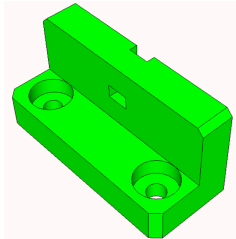
y-endstop v2.01  
- 1 per printer



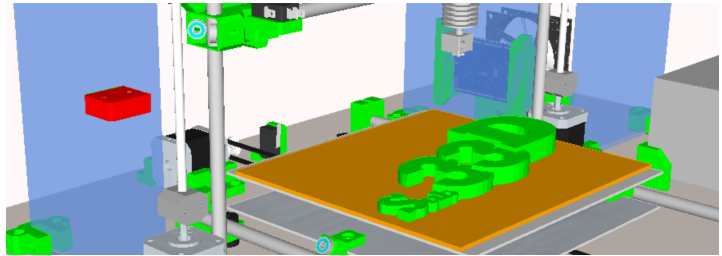
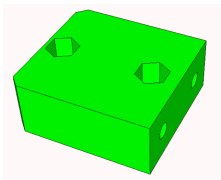
y-idler v2.02  
- 1 per printer



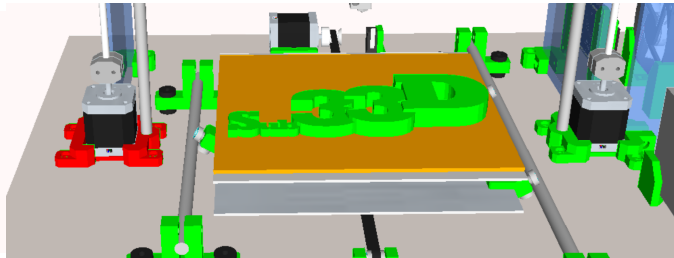
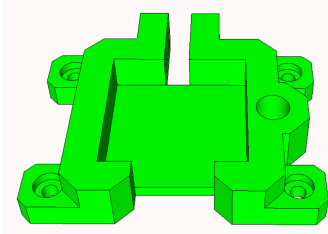
y-motor mount v2.02  
- 2 per printer



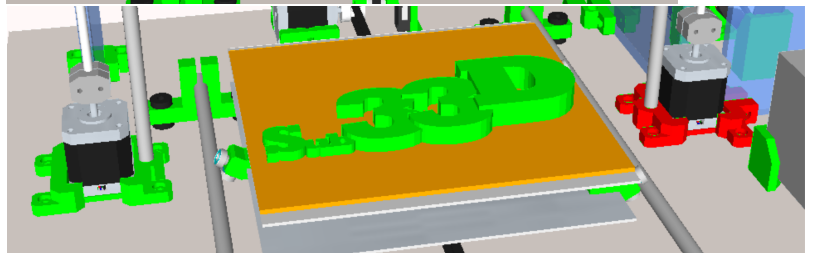
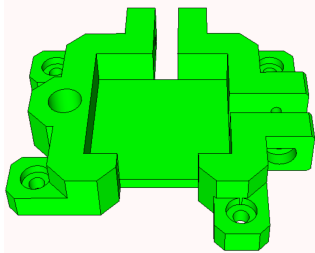
z-endstop v2.03  
- 1 per printer



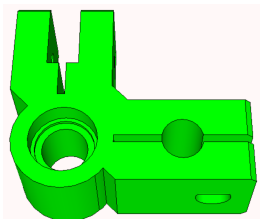
z-motor mount left v2.01  
- 1 per printer



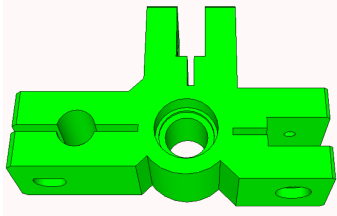
z-motor mount right v2.01  
- 1 per printer



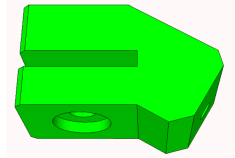
z-top left v2.01  
- 1 per printer



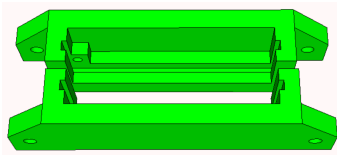
z-top right v2.01  
- 1 per printer



Heat bearing mount 2.5mm  
- 3 per printer



Ramps brackets  
- 1 set per printer



25mm x M6 tube bush 2.01  
- 2 per printer

