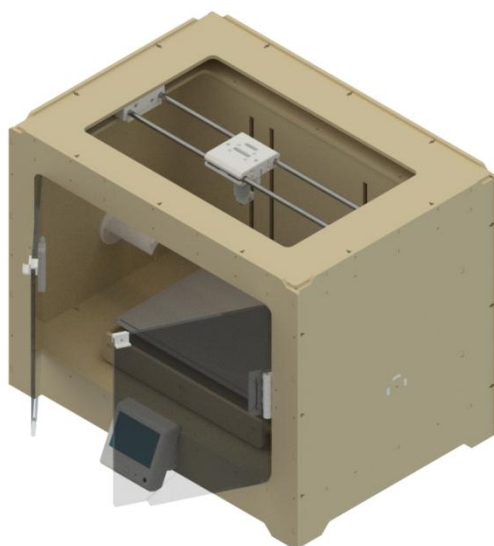


3D Printer

Bill of materials



ITEM NO.	PART NUMBER	DESCRIPTION	QTY.
Plastic parts			
1		Belt clip	2
2		Belt clip mirror	2
3		Case lower	1
4		Case upper	1
5		Clamp table	4
6		Door knob	2
7		End stop Z mount table	1
8		End stop Z	1
9		Front LCD	1
10		Hinge	2
11		Hinge2	2
12		Mount bearing bottom	2
13		Mount bearing up	2
14		Mount e3dv6	1
15		Mount e3dv6-1	1
16		Mount LCD	2
17		Mount t8	1
18		Mount Y axis	4
19		Mount Z axis up	2
20		Mount Z axis down	2
21		Spool 1	2
22		Spool 2	2
23		Stop Y carriage	2
24		Stop Z carriage	1

25		Tube mount	2
26		X carriage down	1
27		X carriage up	1
28		Y carriage down	2
29		Y carriage up	2
30		Z mount back	2
31		Z mount front	2
Metric fasteners			
32		M3x10	10
33		M3x12	31
34		M3x16	62
35		M3x20	27
36		M3x25	4
37		M3x30	2
38		M3 nut	122
39		M4x12	2
40		M4x16	2
41		M4 nut	4
Standard products			
42		E3d V6	1
43		LM8UU	8
44		LM12UU	4
45		Nema 17	4
46		RAMPS 1.4	1
47		Arduino Mega	1
48		DRV 8825	4
49		Full graphic smart LCD controller	1
50		Silicone heater 220v 300 watt 200x300	1
51		SSR-25DA	1
52		Bearing F623zz	16
53		THSL-300-8D	1
54		GT2 pulley 20 teeth 5mm bore	2
55		Power supply 200 watt 12v	1
56		Aluminum plate 3mm 200x300mm	1
57		Rod 8mm 345mm	2
58		Rod 8mm 435mm	2
59		Rod 12mm 335mm	2
60		Micro switch end stop	3
61		Aluminum Flexible Coupling 5x8x25mm	1
62		GT2 belt	4m

Assembly instructions

1. Assembly Y carriage



Assembly parts:

- Y carriage down – 1pcs
- Y carriage up – 1pcs
- Stop Y carriage – 1pcs
- Bearing F623zz – 4pcs
- LM8UU – 2pcs
- M3x20 – 6pcs
- M3 nut – 6pcs

2. Assembly X carriage

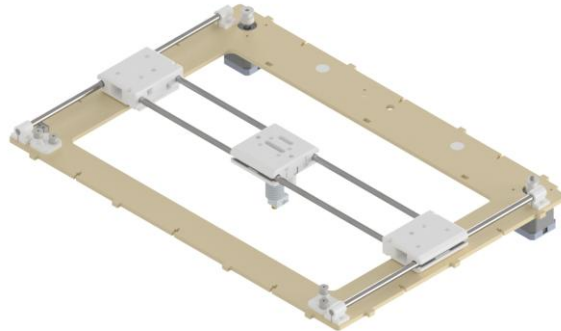


Assembly parts:

- X carriage down – 1pcs
- X carriage up – 1pcs
- Belt clip – 2pcs
- Belt clip mirror – 2pcs
- Mount e3dv6 – 1pcs
- Mount e3dv6-1 – 1pcs
- LM8UU – 4pcs
- E3d V6 – 1pcs

- Micro switch end stop – 1pcs
- M3x25 – 2pcs
- M3x20 – 8pcs
- M3x16 – 2pcs
- M3 nut – 12pcs

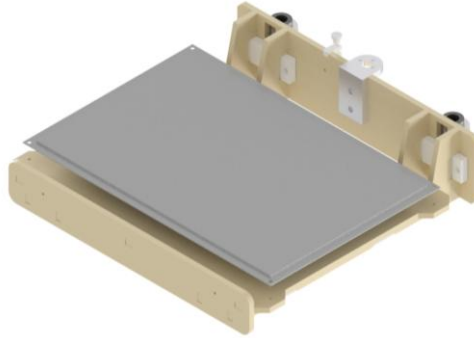
3. Assembly base



Assembly parts:

- X carriage – 1pcs
- Y carriage – 2pcs
- Mount bearing bottom – 2pcs
- Mount bearing up – 2pcs
- Mount Y axis – 4pcs
- Mount Z axis up – 2pcs
- End stop Z
- Rod 8mm 345mm – 2pcs
- Rod 8mm 435mm – 2pcs
- Bearing F623zz – 8pcs
- Micro switch end stop – 2pcs
- Nema 17 – 2pcs
- GT2 pulley 20 teeth 5mm bore – 2pcs
- GT2 belt – 4m
- M3x30 – 2pcs
- M3x25 – 2pcs
- M3x12 – 9pcs
- M3x10 – 6pcs
- M3 nut – 19pcs

4. Assembly table



Assembly parts:

- Z mount back – 2pcs
- Z mount front – 2pcs
- Clamp table – 4pcs
- Mount t8 – 1pcs
- Stop Z carriage – 1pcs
- End stop Z mount table – 1pcs
- Aluminum plate 3mm 200x300mm – 1pcs
- Silicone heater 220v 300 watt 200x300 – 1pcs
- LM12UU – 4pcs
- THSL-300-8D – 1pcs
- M3x20 – 5pcs
- M3x16 – 8pcs
- M3x12 – 4pcs